

ELEMENTO | ELEMENT CODICE | CODE

Descr.

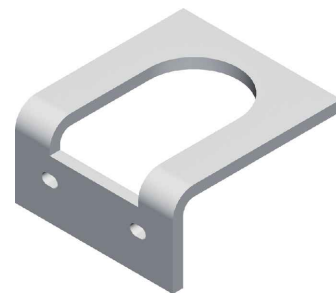
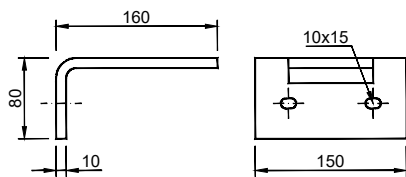
AP-2

PA000002

Materiali / Materials

Acciaio zincato a caldo / Hot dip galvanized steel

Adatto per paline tipo - Suitable for poles type: PI-3



ELEMENTO | ELEMENT CODICE | CODE

Descr.

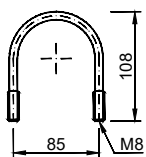
AP-52

PA000052

Materiali / Materials

Acciaio zincato a caldo / Hot dip galvanized steel

Adatto per paline tipo - Suitable for poles type: PI-3



ELEMENTO | ELEMENT CODICE | CODE

Descr.

CL10-2.1/2"

MV0200000CL10

Materiali / Materials

Acciaio zincato elettrolitico / Electrolytic galvanized steel

Adatto per paline tipo - Suitable for poles type: PI-3