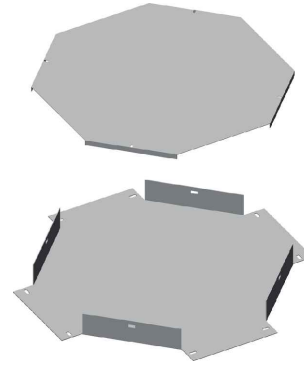
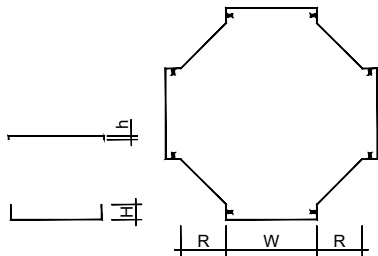


[incrocio | cross]



ELEMENTO | ELEMENT

Descr.	H	W	R	Th
PFL25-X-1-50	25	50	150	1
PFL25-X-1-100	25	100	150	1
PFL25-X-1-50	25	50	150	1,2
PFL25-X-1-100	25	100	150	1,2
PFL50-X-1-50	50	50	150	1,2
PFL50-X-1-100	50	100	150	1,2
PFL50-X-1-200	50	200	150	1,2
PFL50-X-1-300	50	300	150	1,2
PFL50-X-1-50	50	50	150	1,5
PFL50-X-1-100	50	100	150	1,5
PFL50-X-1-200	50	200	150	1,5
PFL50-X-1-300	50	300	150	1,5
PFL75-X-1-100	75	100	150	1,2
PFL75-X-1-200	75	200	150	1,2
PFL75-X-1-300	75	300	150	1,2
PFL75-X-1-400	75	400	150	1,2
PFL75-X-1-500	75	500	150	1,2
PFL75-X-1-100	75	100	150	1,5
PFL75-X-1-200	75	200	150	1,5
PFL75-X-1-300	75	300	150	1,5
PFL75-X-1-400	75	400	150	1,5
PFL75-X-1-500	75	500	150	1,5

CODICE | CODE

HDG	AISI 304	AISI 316
PZX01001BCS	PIX01001BCS	PYX01001BCS
PZX01002BCS	PIX01002BCS	PYX01002BCS
PZX01001AXQ	PIX01001AXQ	PYX01001AXQ
PZX01002AXQ	PIX01002AXQ	PYX01002AXQ
PZX01001AKA	PIX01001AKA	PYX01001AKA
PZX01002AKA	PIX01002AKA	PYX01002AKA
PZX01004AKA	PIX01004AKA	PYX01004AKA
PZX01006AKA	PIX01006AKA	PYX01006AKA
E0X01201	PIX01001AGD	PYX01001AGD
E0X01202	PIX01002AGD	PYX01002AGD
E0X01204	PIX01004AGD	PYX01004AGD
E0X01206	PIX01006AGD	PYX01006AGD
PZX01002ASO	PIX01002ASO	PYX01002ASO
PZX01004ASO	PIX01004ASO	PYX01004ASO
PZX01006ASO	PIX01006ASO	PYX01006ASO
PZX01008ASO	PIX01008ASO	PYX01008ASO
PZX01010ASO	PIX01010ASO	PYX01010ASO
E0X01302	PIX01002AGC	PYX01002AGC
E0X01304	PIX01004AGC	PYX01004AGC
E0X01306	PIX01006AGC	PYX01006AGC
E0X01308	PIX01008AGC	PYX01008AGC
E0X01310	PIX01010AGC	PYX01010AGC

COPERCHIO | COVER

Descr.	h	W	R	Th
PFL-CX-1-50	12	50	150	1
PFL-CX-1-100	12	100	150	1
PFL-CX-1-200	12	200	150	1
PFL-CX-1-300	12	300	150	1
PFL-CX-1-400	12	400	150	1
PFL-CX-1-500	12	500	150	1

CODICE | CODE

HDG	AISI 304	AISI 316
L0X01001	CIX01001AFT	CYX01001AFT
L0X01002	CIX01002AFT	CYX01002AFT
L0X01004	CIX01004AFT	CYX01004AFT
L0X01006	CIX01006AFT	CYX01006AFT
L0X01008	CIX01008AFT	CYX01008AFT
L0X01010	CIX01010AFT	CYX01010AFT

A Richiesta. Materiale: Alluminio - Finitura: Verniciatura - Altezza (H): 50+100 mm - Raggio (R): 100+300 mm - Spessore (Th): 1,0 - 1,2 - 1,5 - 2 mm.
 On request, Material: Aluminium - Finish: Paint job - Height (H): 50+100 mm - Radius (R): 100+300 mm - Thickness (Th): 1,0 - 1,2 - 1,5 - 2 mm.