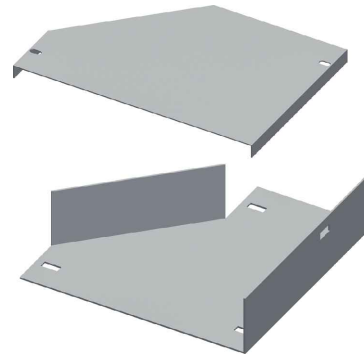
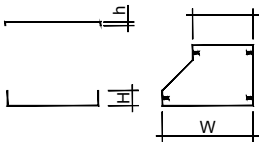


[riduzione destra | right reduction]

19

PFL

[riduzione destra | right reduction]



ELEMENTO | ELEMENT

Descr.	H	W	w	L	Th
PFL25-RD-100/50	25	100	50	150	1
PFL25-RD-100/50	25	100	50	150	1,2
PFL50-RD-100/50	50	100	50	150	1,2
PFL50-RD-200/100	50	200	100	200	1,2
PFL50-RD-300/100	50	300	100	300	1,2
PFL50-RD-300/200	50	300	200	200	1,2
PFL50-RD-100/50	50	100	50	150	1,5
PFL50-RD-200/100	50	200	100	200	1,5
PFL50-RD-300/100	50	300	100	300	1,5
PFL50-RD-300/200	50	300	200	200	1,5
PFL75-RD-200/100	75	200	100	200	1,2
PFL75-RD-300/100	75	300	100	300	1,2
PFL75-RD-300/200	75	300	200	200	1,2
PFL75-RD-400/100	75	400	100	400	1,2
PFL75-RD-400/200	75	400	200	300	1,2
PFL75-RD-400/300	75	400	300	200	1,2
PFL75-RD-500/100	75	500	100	500	1,2
PFL75-RD-500/200	75	500	200	400	1,2
PFL75-RD-500/300	75	500	300	300	1,2
PFL75-RD-500/400	75	500	400	200	1,2
PFL75-RD-200/100	75	200	100	200	1,5
PFL75-RD-300/100	75	300	100	300	1,5
PFL75-RD-300/200	75	300	200	200	1,5
PFL75-RD-400/100	75	400	100	400	1,5
PFL75-RD-400/200	75	400	200	300	1,5
PFL75-RD-400/300	75	400	300	200	1,5
PFL75-RD-500/100	75	500	100	500	1,5
PFL75-RD-500/200	75	500	200	400	1,5
PFL75-RD-500/300	75	500	300	300	1,5
PFL75-RD-500/400	75	500	400	200	1,5

CODICE | CODE

HDG	AISI 304	AISI 316
PZRD0201BCS	PIRD0201BCS	PYRD0201BCS
PZRD0201AXQ	PIRD0201AXQ	PYRD0201AXQ
PZRD0201AKA	PIRD0402AKA	PYRD0402AKA
PZRD0402AKA	PIRD0602AKA	PYRD0602AKA
PZRD0602AKA	PIRD0402AKA	PYRD0402AKA
PZRD0604AKA	PIRD0602AKA	PYRD0602AKA
E2RD0201	PIRD0402AGD	PYRD0402AGD
E2RD0402	PIRD0602AGD	PYRD0602AGD
E2RD0602	PIRD0402AGD	PYRD0402AGD
E2RD0604	PIRD0602AGD	PYRD0602AGD
⊕ PZRD0402ASO	PIRD0402ASO	PYRD0402ASO
⊕ PZRD0602ASO	PIRD0602ASO	PYRD0602ASO
⊕ PZRD0604ASO	PIRD0402ASO	PYRD0402ASO
⊕ PZRD0802ASO	PIRD0602ASO	PYRD0602ASO
PZRD0804ASO	PIRD0402ASO	PYRD0402ASO
PZRD0806ASO	PIRD0602ASO	PYRD0602ASO
PZRD1002ASO	PIRD0402ASO	PYRD0402ASO
PZRD1004ASO	PIRD0602ASO	PYRD0602ASO
PZRD1006ASO	PIRD0402ASO	PYRD0402ASO
PZRD1008ASO	PIRD0602ASO	PYRD0602ASO
E3RD0402	PIRD0402AGC	PYRD0402AGC
E3RD0602	PIRD0602AGC	PYRD0602AGC
E3RD0604	PIRD0402AGC	PYRD0402AGC
⊕ E3RD0802	PIRD0602AGC	PYRD0602AGC
⊕ E3RD0804	PIRD0402AGC	PYRD0402AGC
⊕ E3RD0806	PIRD0602AGC	PYRD0602AGC
⊕ E3RD1002	PIRD0402AGC	PYRD0402AGC
⊕ E3RD1004	PIRD0602AGC	PYRD0602AGC
⊕ E3RD1006	PIRD0402AGC	PYRD0402AGC
⊕ E3RD1008	PIRD0602AGC	PYRD0602AGC

COPERCHIO | COVER

Descr.	h	W	w	Th
PFL-CRD-100/50	12	100	50	1
PFL-CRD-200/100	12	200	100	1
PFL-CRD-300/100	12	300	100	1
PFL-CRD-300/200	12	300	200	1
PFL-CRD-400/100	12	400	100	1
PFL-CRD-400/200	12	400	200	1
PFL-CRD-400/300	12	400	300	1
PFL-CRD-500/100	12	500	100	1
PFL-CRD-500/200	12	500	200	1
PFL-CRD-500/300	12	500	300	1
PFL-CRD-500/400	12	500	400	1

CODICE | CODE

HDG	AISI 304	AISI 316
L0RD0201	CIRD0402AFT	CYRD0402AFT
L0RD0402	CIRD0602AFT	CYRD0602AFT
L0RD0602	CIRD0604AFT	CYRD0604AFT
L0RD0604	CIRD0802AFT	CYRD0802AFT
L0RD0802	CIRD0804AFT	CYRD0804AFT
L0RD0804	CIRD0806AFT	CYRD0806AFT
L0RD0806	CIRD1002AFT	CYRD1002AFT
L0RD1002	CIRD1004AFT	CYRD1004AFT
L0RD1004	CIRD1006AFT	CYRD1006AFT
L0RD1006	CIRD1008AFT	CYRD1008AFT
L0RD1008	CIRD1202AFT	CYRD1202AFT

A Richiesta. Materiale: Alluminio - Finitura: Verniciatura - Altezza (H): 50+100 mm - Spessore (Th): 1,0 - 1,2 - 1,5 - 2 mm.
 On request. Material: Aluminium - Finish: Paint job - Height (H): 50+100 mm - Thickness (Th): 1,0 - 1,2 - 1,5 - 2 mm.