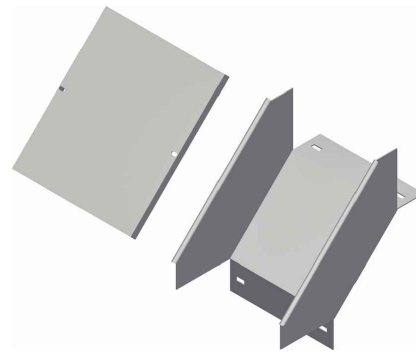
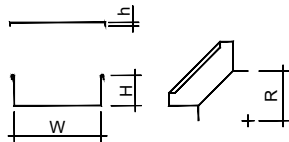


[curva discesa 90° | 90° external vertical bend]



ELEMENTO | ELEMENT

Descr.	H	W	R	Th
PFLR60-CD90-2-100	60	100	200	1,2
PFLR60-CD90-2-200	60	200	200	1,2
PFLR60-CD90-2-300	60	300	200	1,2
PFLR60-CD90-2-400	60	400	200	1,2
PFLR60-CD90-2-500	60	500	200	1,2
PFLR60-CD90-2-600	60	600	200	1,2
PFLR60-CD90-2-100	60	100	200	1,5
PFLR60-CD90-2-200	60	200	200	1,5
PFLR60-CD90-2-300	60	300	200	1,5
PFLR60-CD90-2-400	60	400	200	1,5
PFLR60-CD90-2-500	60	500	200	1,5
PFLR60-CD90-2-600	60	600	200	1,5
PFLR100-CD90-2-100	100	100	200	1,5
PFLR100-CD90-2-200	100	200	200	1,5
PFLR100-CD90-2-300	100	300	200	1,5
PFLR100-CD90-2-400	100	400	200	1,5
PFLR100-CD90-2-500	100	500	200	1,5
PFLR100-CD90-2-600	100	600	200	1,5
PFLR100-CD90-2-100	100	100	200	2
PFLR100-CD90-2-200	100	200	200	2
PFLR100-CD90-2-300	100	300	200	2
PFLR100-CD90-2-400	100	400	200	2
PFLR100-CD90-2-500	100	500	200	2
PFLR100-CD90-2-600	100	600	200	2

COPERCHIO | COVER

Descr.	h	W	R	Th
PFLR60-CCD90-2-100	12	100	200	1
PFLR60-CCD90-2-200	12	200	200	1
PFLR60-CCD90-2-300	12	300	200	1
PFLR60-CCD90-2-400	12	400	200	1
PFLR60-CCD90-2-500	12	500	200	1
PFLR60-CCD90-2-600	12	600	200	1
PFLR100-CCD90-2-100	12	100	200	1
PFLR100-CCD90-2-200	12	200	200	1
PFLR100-CCD90-2-300	12	300	200	1
PFLR100-CCD90-2-400	12	400	200	1
PFLR100-CCD90-2-500	12	500	200	1
PFLR100-CCD90-2-600	12	600	200	1

CODICE | CODE

HDG	AISI 304	AISI 316
PZD92002AJY	PID92002AJY	PYD92002AJY
PZD92004AJY	PID92004AJY	PYD92004AJY
PZD92006AJY	PID92006AJY	PYD92006AJY
PZD92008AJY	PID92008AJY	PYD92008AJY
PZD92010AJY	PID92010AJY	PYD92010AJY
PZD92012AJY	PID92012AJY	PYD92012AJY
⊕ B0D92002	PID92002AQQ	PYD92002AQQ
⊕ B0D92004	PID92004AQQ	PYD92004AQQ
⊕ B0D92006	PID92006AQQ	PYD92006AQQ
⊕ B0D92008	PID92008AQQ	PYD92008AQQ
⊕ B0D92010	PID92010AQQ	PYD92010AQQ
⊕ B0D92012	PID92012AQQ	PYD92012AQQ
⊕ C0D92002	PID92002AQI	PYD92002AQI
⊕ C0D92004	PID92004AQI	PYD92004AQI
⊕ C0D92006	PID92006AQI	PYD92006AQI
⊕ C0D92008	PID92008AQI	PYD92008AQI
⊕ C0D92010	PID92010AQI	PYD92010AQI
⊕ C0D92012	PID92012AQI	PYD92012AQI
PZD92002AQR	PID92002AQR	PYD92002AQR
PZD92004AQR	PID92004AQR	PYD92004AQR
PZD92006AQR	PID92006AQR	PYD92006AQR
PZD92008AQR	PID92008AQR	PYD92008AQR
PZD92010AQR	PID92010AQR	PYD92010AQR
PZD92012AQR	PID92012AQR	PYD92012AQR
HBD92002	CID92002ACU	CYD92002ACU
HBD92004	CID92004ACU	CYD92004ACU
HBD92006	CID92006ACU	CYD92006ACU
HBD92008	CID92008ACU	CYD92008ACU
HBD92010	CID92010ACU	CYD92010ACU
HBD92012	CID92012ACU	CYD92012ACU
HCD92002	CID92002AEW	CYD92002AEW
HCD92004	CID92004AEW	CYD92004AEW
HCD92006	CID92006AEW	CYD92006AEW
HCD92008	CID92008AEW	CYD92008AEW
HCD92010	CID92010AEW	CYD92010AEW
HCD92012	CID92012AEW	CYD92012AEW

A Richiesta. Materiale: Alluminio - Finitura: Verniciatura - Altezza (H): 50+150 mm - Raggio (R): 300+1000 mm - Spessore (Th): 1,0 - 1,2 - 1,5 - 2 mm.
 On request. Material: Aluminium - Finish: Paint job - Height (H): 50+150 mm - Radius (R): 300+1000 mm - Thickness (Th): 1,0 - 1,2 - 1,5 - 2 mm.