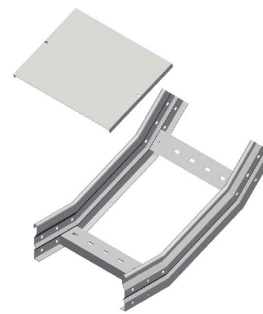
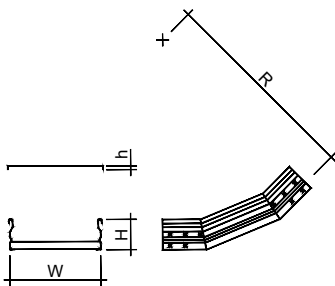


[ curva salita 45° | 45° internal vertical bend ]



ELEMENTO | ELEMENT

CODICE | CODE

Descr.	H	W	R	Th
PTR100-CS45-6-100	100	100	600	1,2
PTR100-CS45-6-200	100	200	600	1,2
PTR100-CS45-6-300	100	300	600	1,2
PTR100-CS45-6-400	100	400	600	1,2
PTR100-CS45-6-500	100	500	600	1,2
PTR100-CS45-6-600	100	600	600	1,2
PTR100-CS45-6-100	100	100	600	1,5
PTR100-CS45-6-200	100	200	600	1,5
PTR100-CS45-6-300	100	300	600	1,5
PTR100-CS45-6-400	100	400	600	1,5
PTR100-CS45-6-500	100	500	600	1,5
PTR100-CS45-6-600	100	600	600	1,5
PTR150-CS45-6-200	150	200	600	1,5
PTR150-CS45-6-300	150	300	600	1,5
PTR150-CS45-6-400	150	400	600	1,5
PTR150-CS45-6-500	150	500	600	1,5
PTR150-CS45-6-600	150	600	600	1,5
PTR150-CS45-6-800	150	800	600	1,5
PTR150-CS45-6-200	150	200	600	2
PTR150-CS45-6-300	150	300	600	2
PTR150-CS45-6-400	150	400	600	2
PTR150-CS45-6-500	150	500	600	2
PTR150-CS45-6-600	150	600	600	2
PTR150-CS45-6-800	150	800	600	2

HDG	AISI 304	AISI 316
N0S46002	PIS46002APH	PYS46002APH
N0S46004	PIS46004APH	PYS46004APH
N0S46006	PIS46006APH	PYS46006APH
N0S46008	PIS46008APH	PYS46008APH
N0S46010	PIS46010APH	PYS46010APH
N0S46012	PIS46012APH	PYS46012APH
A0S46002	PIS46002ANU	PYS46002ANU
A0S46004	PIS46004ANU	PYS46004ANU
A0S46006	PIS46006ANU	PYS46006ANU
A0S46008	PIS46008ANU	PYS46008ANU
A0S46010	PIS46010ANU	PYS46010ANU
A0S46012	PIS46012ANU	PYS46012ANU
PZS46004AMT	PIS46004AMT	PYS46004AMT
PZS46006AMT	PIS46006AMT	PYS46006AMT
PZS46008AMT	PIS46008AMT	PYS46008AMT
PZS46010AMT	PIS46010AMT	PYS46010AMT
PZS46012AMT	PIS46012AMT	PYS46012AMT
PZS46016AMT	PIS46016AMT	PYS46016AMT
PZS46004ALO	PIS46004ALO	PYS46004ALO
PZS46006ALO	PIS46006ALO	PYS46006ALO
PZS46008ALO	PIS46008ALO	PYS46008ALO
PZS46010ALO	PIS46010ALO	PYS46010ALO
PZS46012ALO	PIS46012ALO	PYS46012ALO
PZS46016ALO	PIS46016ALO	PYS46016ALO

COPERCHIO | COVER

CODICE | CODE

Descr.	h	W	R	Th
PTR100-CCS45-6-100	12	100	600	1
PTR100-CCS45-6-200	12	200	600	1
PTR100-CCS45-6-300	12	300	600	1
PTR100-CCS45-6-400	12	400	600	1
PTR100-CCS45-6-500	12	500	600	1
PTR100-CCS45-6-600	12	600	600	1
PTR150-CCS45-6-200	12	200	600	1
PTR150-CCS45-6-300	12	300	600	1
PTR150-CCS45-6-400	12	400	600	1
PTR150-CCS45-6-500	12	500	600	1
PTR150-CCS45-6-600	12	600	600	1
PTR150-CCS45-6-800	12	800	600	1

HDG	AISI 304	AISI 316
G0S46002	CIS46002AFM	CYS46002AFM
G0S46004	CIS46004AFM	CYS46004AFM
G0S46006	CIS46006AFM	CYS46006AFM
G0S46008	CIS46008AFM	CYS46008AFM
G0S46010	CIS46010AFM	CYS46010AFM
G0S46012	CIS46012AFM	CYS46012AFM
CZS46004AEY	CIS46004AEY	CYS46004AEY
CZS46006AEY	CIS46006AEY	CYS46006AEY
CZS46008AEY	CIS46008AEY	CYS46008AEY
CZS46010AEY	CIS46010AEY	CYS46010AEY
CZS46012AEY	CIS46012AEY	CYS46012AEY
CZS46016AEY	CIS46016AEY	CYS46016AEY

A Richiesta. Materiale: Alluminio - Finitura: Verniciatura - Altezza (H): 125, 185, 200 mm - Raggio (R): 300+1000 mm - Spessore (Th): 1,2 -1,5 - 2 mm - Interasse (i): <300mm.  
 On request. Material: Aluminium - Finish: Paint job - Height (H): 125, 185, 200 mm - Radius (R): 300+1000 mm - Thickness (Th): 1,2 - 1,5 - 2 mm - Rungs pitch (i): <300mm.