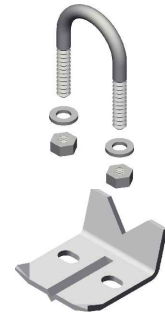
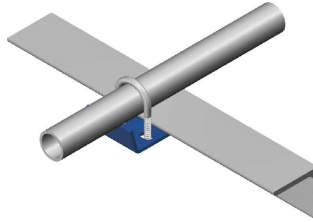
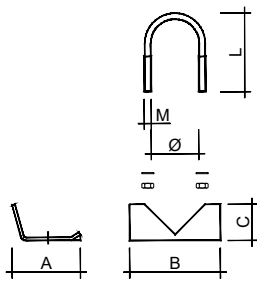


[morsetto fissatubo MT | MT pipe fastening clamp]



ELEMENTO | ELEMENT

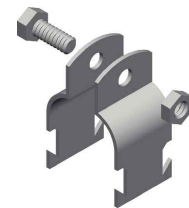
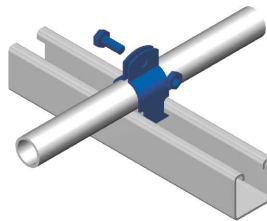
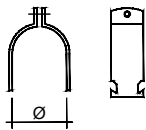
Ø Tubo / Ø Conduit	A	B	C	M	L
1/2" - 3/4"	55	50	29		
1" - 1.1/4"	62	70	34		
1.1/2" - 2"	68	90	39		
1/2"				6	58
3/4"				6	62
1"				6	70
1.1/4"				6	78
1.1/2"				8	90
2"				8	102

CODICE | CODE

EGS	AISI 304	AISI 316
TE070011	*	*
TE070013	*	*
TE070015	*	*
MV0200000CL04	*	*
MV0200000CL05	*	*
MV0200000CL06	*	*
MV0200000CL07	*	*
MV0200000CL08	*	*
MV0200000CL09	*	*

* A richiesta - On request

[morsetto fissatubo ET | ET pipe fastening clamp]



ELEMENTO | ELEMENT

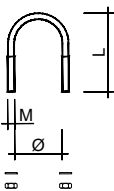
Ø Tubo / Ø Conduit	A
1/2"	55
3/4"	62
1"	70
1.1/4"	78
1.1/2"	85
2"	92

CODICE | CODE

EGS	AISI 304	AISI 316
MV0200000ET04	*	*
MV0200000ET05	*	*
MV0200000ET06	*	*
MV0200000ET07	*	*
MV0200000ET08	*	*
MV0200000ET09	*	*

* A richiesta - On request

[cavallotto | U bolt]



ELEMENTO | ELEMENT

Ø Tubo / Ø Conduit	M	L
1/2"	6	49
3/4"	6	53
1"	6	61
1.1/4"	6	69
1.1/2"	8	81
2"	8	93
2.1/2"	8	109

CODICE | CODE

EGS	AISI 304	AISI 316
MV0200000CZL04	MV0200000CIL04	*
MV0200000CZL05	MV0200000CIL05	*
MV0200000CZL06	MV0200000CIL06	*
MV0200000CZL07	MV0200000CIL07	*
MV0200000CZL08	MV0200000CIL08	*
MV0200000CZL09	MV0200000CIL09	*
MV0200000CZL10	MV0200000CIL10	*

* A richiesta - On request