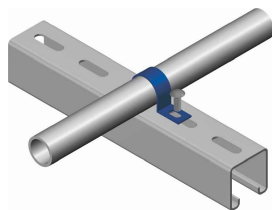
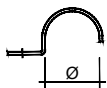


[gaffetta | collar]



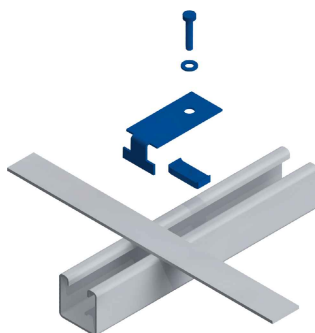
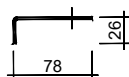
ELEMENTO | ELEMENT

CODICE | CODE

Ø Tubo / Ø Conduit	EGS	AISI 304	AISI 316
1/2"	MV0200000GF04	*	*
3/4"	MV0200000GF05	*	*
1"	MV0200000GF06	*	*
1.1/4"	MV0200000GF07	*	*
1.1/2"	MV0200000GF08	*	*
2"	MV0200000GF09	*	*

* A richiesta - On request

[kit per fissaggio piatto di terra | earth bar fixing kit]



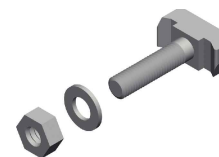
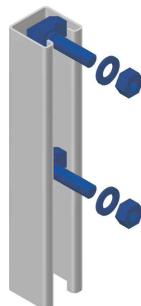
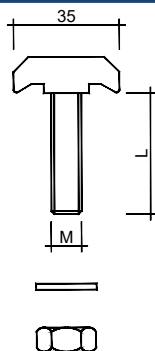
ELEMENTO | ELEMENT

CODICE | CODE

Descr.	EGS	AISI 304	AISI 316
Vite M6x25 / Screw M6x25	VEX625	VIX625	VY625
Rondella piana D=6 / Washer D6	VERP06	VIRP06	VYRP06
FR-405	S0FR0000 **	*	*
Dado ad ancora M6 / Anchor nut M6	VEA006	VIA006	VYA006

* A richiesta - On request ** Rame / Copper

[bullone fissaggio sostegni | support fixing bolt]



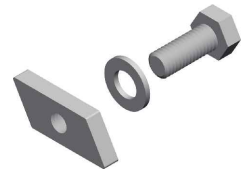
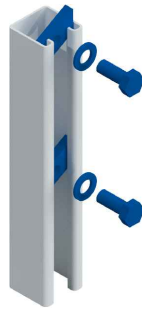
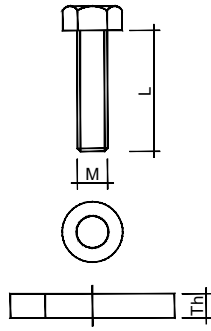
ELEMENTO | ELEMENT

CODICE | CODE

Descr.	M	L	HDG	AISI 304	AISI 316
Vite ad ancora / Anchor bolt	10	40	VZ1040	*	*
Rondella piana / Washer			VZRP10	*	*
Dado / Nut			VZDM10	*	*
Vite ad ancora / Anchor bolt	12	40	VZ1240	*	*
Rondella piana / Washer			VZRP12	*	*
Dado / Nut			VZDM12	*	*

* A richiesta - On request

[bullone fissaggio sostegni | support fixing bolt]



ELEMENTO | ELEMENT

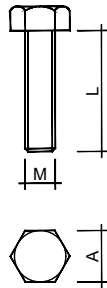
Descr.	M	L
Vite / Screw	12	30
Rondella piana / Washer		
Dado ad ancora / Anchor nut		

CODICE | CODE

HDG	AISI 304	AISI 316
MC06TE0012030	*	*
VZRP12	*	*
VZA012	*	*

* A richiesta - On request

[vite a testa esagonale | hexagon head screw]



ELEMENTO | ELEMENT

Descr.	M	L	A
UNI 5739	6	20	10
UNI 5739	6	40	10
UNI 5739	6	60	10
UNI 5739	8	20	13
UNI 5739	8	40	13
UNI 5739	8	60	13
UNI 5739	10	40	17
UNI 5739	10	60	17
UNI 5739	10	80	17
UNI 5737	10	100	17
UNI 5739	12	40	19
UNI 5739	12	60	19
UNI 5739	12	80	19
UNI 5737	12	100	19

CODICE | CODE

EGS	AISI 304	AISI 316
MC01TE0006020	*	*
MC01TE0006040	*	*
MC01TE0006060	*	*
MC01TE0008020	*	*
MC01TE0008040	*	*
MC01TE0008060	*	*
MC01TE0010020	*	*
MC01TE0010040	*	*
MC01TE0010060	*	*
MC01TE0010100	*	*
MC01TE0012040	*	*
MC01TE0012060	*	*
MC01TE0012080	*	*
MC01TE0012100	*	*

Nota / Note: altre misure a richiesta - other dimensions on request. * A richiesta - On request

[rondella piana | washer]



ELEMENTO | ELEMENT

Descr.	D	d	Th
UNI 6592	12	6,4	1,6
UNI 6592	16	8,4	1,6
UNI 6592	20	10,5	2
UNI 6592	24	13	2,5

CODICE | CODE

EGS	AISI 304	AISI 316
MC01RP0006000	*	*
MC01RP0008000	*	*
MC01RP0010000	*	*
MC01RP0012000	*	*

Nota / Note: altre misure a richiesta - other dimensions on request. * A richiesta - On request