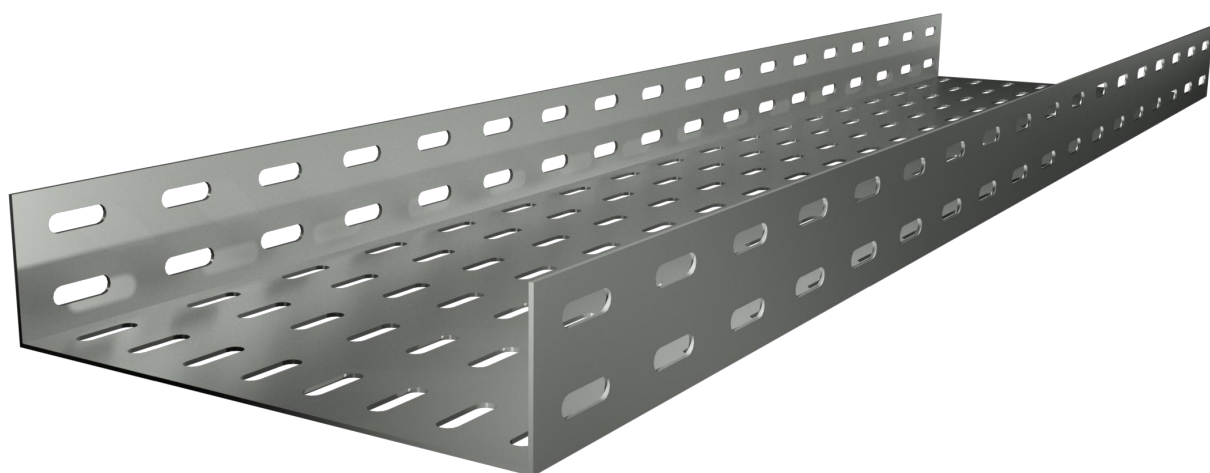


[passerelle a fondo forato | perforated bottom cable trays]



PFL



[passerelle a fondo forato | perforated bottom cable trays]

3

INDICE	INDEX	
Legenda	<i>Legend</i>	4-5
Note tecniche	<i>Technical informations</i>	6-7
Elemento rettilineo	<i>Straight element</i>	8
Curva piana 90°	<i>90° horizontal bend</i>	9
Curva piana 45°	<i>45° horizontal bend</i>	10
Curva salita 90°	<i>90° internal vertical bend</i>	11
Curva salita 45°	<i>45° internal vertical bend</i>	12
Curva discesa 90°	<i>90° external vertical bend</i>	13
Curva discesa 45°	<i>45° external vertical bend</i>	14
Derivazione T	<i>Tee</i>	15
Derivazione T laterale	<i>Lateral Tee</i>	16
Incrocio	<i>Cross</i>	17
Riduzione centrale	<i>Central reduction</i>	18
Riduzione destra	<i>Right reduction</i>	19
Riduzione sinistra	<i>Left reduction</i>	20
Giunto normale	<i>Normal joint</i>	21
Giunto per pezzi speciali	<i>Joint for special component</i>	21
Giunto di riduzione	<i>Reduction joint</i>	22
Terminazione passerella	<i>End plate</i>	23
Setto separatore	<i>Divider</i>	23
Bullone per giunzioni	<i>Bolt for joints</i>	24
Bullone fissaggio passerella	<i>Cable raceways fixing bolt</i>	24
Bullone fissaggio passerella a rack	<i>Cable raceways fixing bolt to rack</i>	24
Fissaggio coperchio	<i>Cover fixing</i>	25
Esempio di assiemaggio	<i>Assembling example</i>	27



H	Altezza Height	HDG	Zincato a caldo Hot dip galvanized
W	Larghezza Width	AISI 304	Acciaio inox Stainless steel AISI 304 AISI 304
w	Larghezza Width	AISI 316	Acciaio inox Stainless steel AISI 316 AISI 316
L	Larghezza Length	Send zimir	Acciaio Sendzimir Sendzimir steel
R	Raggio Radius	EGS	Zincato Electrolytically elettroliticamente galvanized steel
i	Interasse Rungs pitch	GRE	Grezzo Coarse
Th	Spessore Thickness		
P	Portata (N) Capacity load (N)		
Ø	Diametro Diameter		

PFL 75 - C90 - 1 - 300

5



1 Tipologia di passerella / Cable tray type

*PFL = Passerella forata con aletta semplice /
Perforated bottom cable trays with single ribs*

2 Altezza nominale / Nominal height

Da 25 a 150 mm / From 25 to 150 mm

3 Elemento / Element

*DR = Elemento rettilineo / Straight element
C90 = Curva piana 90° / 90° Horizontal bend
C45 = Curva piana 45° / 45° Horizontal bend
CSN = Curva snodata / Hinged bend element
S90 = Curva salita 90° / 90° Internal vertical bend
S45 = Curva salita 45° / 45° Internal vertical bend
D90 = Curva discesa 90° / 90° External vert. bend
D45 = Curva discesa 45° / 45° External vert. bend
T = Derivazione T / Tee
TL = Derivazione T laterale / Lateral tee
X = Incrocio / Cross
RC = Riduzione centrale / Central reduction
RD = Riduzione destra / Right reduction
RS = Riduzione sinistra / Left reduction
GN = Giunto normale / Normal joint
GPS = Giunto per pezzi speciali /
Joint for special components
GR = Giunto di riduzione / Reduction joint
TP = Terminazione passerella / End plate
SS = Setto separatore / Divider*

4 Raggio di curvatura / Bending radius

*1 = 150 mm
2 = 200 mm
3 = 300 mm*

5 Larghezza nominale / Nominal width

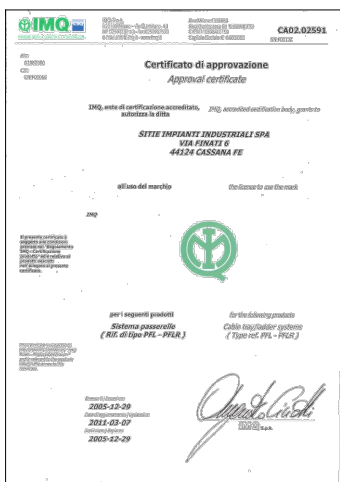
Da 50 a 600 mm / From 50 to 600 mm

PFL

Member of CISQ Federation



CERTIFIED MANAGEMENT SYSTEM
ISO 9001 - ISO 14001
ISO 45001



Certificato di approvazione
 IMQ CA02.02591 per
 Passerelle a fondo forato.

IMQ approval certificate
 CA02.02591
 for Perforated bottom cable trays.

INTRODUZIONE

Le passerelle forate ad aletta semplice tipo PFL trovano la migliore utilizzazione nel montaggio degli impianti di strumentazione.

Sono infatti particolarmente adatte al contenimento di cavi di e tubi in rame di piccola sezione.

Le caratteristiche costruttive derivano dalla lunga esperienza SITIE nel settore dei montaggi industriali, ne consentono l'utilizzo in impianti che per le loro caratteristiche necessitano di elevata sicurezza ed affidabilità.

Lavorando da anni in regime di qualità, con le certificazioni per qualità, ambiente e sicurezza ISO 9001-2000, ISO 14001 e ISO 45001, SITIE detiene il marchio IMQ per tale tipo di passerelle.

Le tipologie certificate sono contrassegnate nel presente catalogo dal marchio .

NOTE TECNICHE

Le passerelle forate ad aletta semplice tipo PFL sono progettate e costruite in conformità alla norma CEI EN 61537 Classe 23-76 e sono fornibili nei seguenti materiali:

- acciaio al carbonio S235JR (norma di riferimento UNI EN 10025) e zincate a caldo per immersione dopo lavorazione secondo norma ISO 1461.
- acciaio inox AISI 304
- acciaio inox AISI 316
- lamiera di acciaio zincato a caldo tipo sendzimir, S250GD Z200 (norma di riferimento UNI EN 10147).

Le passerelle forate ad aletta diritta tipo PFL sono ottenute da profilatura a freddo.

I raggi di curvatura dei pezzi speciali tengono conto delle normative CEI 11-17 che stabiliscono un raggio minimo di curvatura in rapporto al diametro del cavo a richiesta è possibile fornire raggi di curvatura diversi.

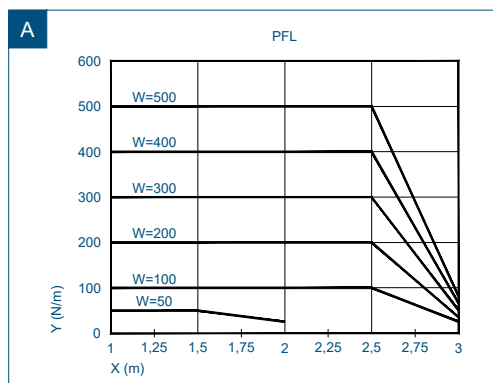
I coperchi sono costruiti normalmente piani di spessore 1,00 mm.

A richiesta si possono avere spessori maggiori e forma spiovente.

PORTATE DELLE PASSERELLE (fig. A)

Il sistema di passerelle forate ad aletta semplice tipo PFL è stato sottoposto ai test per la definizione dei carichi massimi applicabili (SWL – Safe Working Load) in conformità alla norma CEI EN 61537.

Riportiamo qui di seguito il diagramma che definisce, in funzione della distanza tra i sostegni, il carico massimo sopportabile uniformemente distribuito (UDL – Uniformly Distributed load).



— Carico uniformemente distribuito / Uniformly distributed load
 X Distanza tra gli appoggi (metri) / Distance between supports (meters)
 Y Carico uniformemente distribuito (N/m) / Uniformly distributed load (N/m)

CONTINUITÀ ELETTRICA

Il sistema di passerelle forate ad aletta semplice tipo PFL è stato sottoposto ai test per la verifica della continuità elettrica in conformità alla norma CEI EN 61537.

La prova consiste nel far passare una corrente di 25 A, con frequenza compresa tra 50 e 60 Hz, per tutta la lunghezza dei campioni; la caduta di tensione deve essere misurata sia attraverso il giunto che sulla passerella intera, e quindi:

- tra due punti a 50 mm da ogni lato del giunto
- tra due punti a distanza 500 mm su un lato rispetto al giunto.

Le impedenze misurate non devono superare i 50 mΩ attraverso il giunto e 5 mΩ per metro senza il giunto.


La prova è stata eseguita su due elementi di passerella uniti da un giunto e 8 bulloni con quadro sotto testa M6x12.

INTRODUCTION

Perforated cable trays with single ribs PFL type are the best solution for the installation of instrumentation plants.

They are, in fact, particularly suitable for the containment of low-section copper cables and pipes.

Constructional features, which are the results of SITIE long experience in the field of industrial installations, permit their use and installation in all kinds of environment where reliability and safety are priority-requirements.

Further to a long experience under a quality control system, with the ISO 9001-2000, ISO 14001 and ISO 45001 certifications for quality, environment and safety, SITIE has obtained the IMQ mark for this kind of cable trays. Certified typologies are countermarked on this catalogue with mark .

TECHNICAL NOTES

Perforated Cable Trays with single ribs PFL type are designed and manufactured in accordance with the standard CEI EN 61537 Class 23-76 and can be manufactured made of:

- carbon steel S235JR (reference standard UNI EN 10025) hot dip galvanized after working according to ISO 1461
- stainless steel AISI 304
- stainless steel AISI 316
- sendzimir S250GD Z200 (reference standard UNI EN 10147).

Perforated cable trays with single ribs PFL type are obtained by cold-profiling of coils.

Bending radii of special pieces take into consideration the CEI 11-17 standard, which settles the minimum bending radius according to cable's diameter; on request, we can supply different bending radii.

Standard covers are plane type and 1.00 mm thick.

On request, higher thickness can be manufactured as well as flowing type covers.

PERFORATED TRAYS CAPACITY LOAD (Picture A)

Perforated Cable trays with single ribs PFL type have been tested through strict tests, to define the maximum admissible load (SWL – Safe Working Load) in compliance with the CEI EN 61537 standard; please find herewith enclosed the diagrams which define, according to the distance between supports, the maximum admissible distributed load (UDL – Uniformly Distributed Load).

ELECTRICAL CONTINUITY

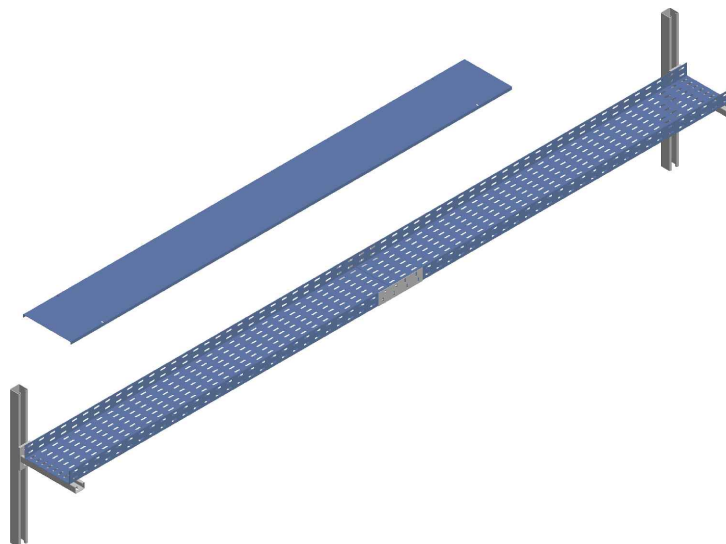
Perforated Cable Trays with single ribs PFL type have been tested to verify the electrical continuity in accordance with CEI EN 61537 standard.

The test consists in the passage all along the elements of a 25A electric current, with a frequency between 50 and 60 Hz; the voltage drop must be measured both through the joint and on the whole tray, therefore:

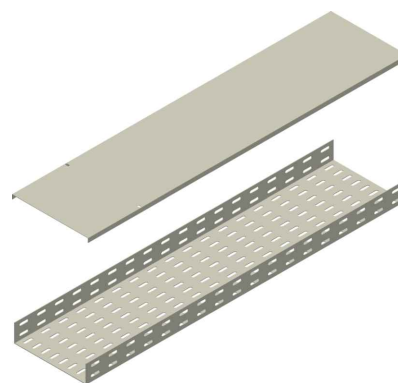
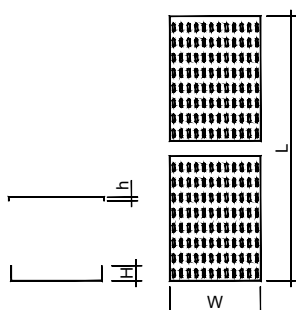
- between two points, 50 mm away from each side of the joint;
- between two points, on one side 500 mm away from the joint.

The measured impedances shouldn't exceed 50 mΩ through the joint and 5 mΩ per metre without the joint.

The test has been carried out on two straight elements connected by one joint fixed by 8 cup square screws M6x12.



[elemento rettilineo | straight element]



ELEMENTO | ELEMENT

Descr.	H	W	L	Th
PFL25-DR-50	25	50	3000	1
PFL25-DR-100	25	100	3000	1
PFL25-DR-50	25	50	3000	1,2
PFL25-DR-100	25	100	3000	1,2
PFL50-DR-50	50	50	3000	1,2
PFL50-DR-100	50	100	3000	1,2
PFL50-DR-200	50	200	3000	1,2
PFL50-DR-300	50	300	3000	1,2
PFL50-DR-50	50	50	3000	1,5
PFL50-DR-100	50	100	3000	1,5
PFL50-DR-200	50	200	3000	1,5
PFL50-DR-300	50	300	3000	1,5
PFL75-DR-100	75	100	3000	1,2
PFL75-DR-200	75	200	3000	1,2
PFL75-DR-300	75	300	3000	1,2
PFL75-DR-400	75	400	3000	1,2
PFL75-DR-500	75	500	3000	1,2
PFL75-DR-100	75	100	3000	1,5
PFL75-DR-200	75	200	3000	1,5
PFL75-DR-300	75	300	3000	1,5
PFL75-DR-400	75	400	3000	1,5
PFL75-DR-500	75	500	3000	1,5

CODICE | CODE

HDG	AISI 304	AISI 316
PZDR3001AIX	PIDR3001AIX	PYDR3001AIX
PZDR3002AIX	PIDR3002AIX	PYDR3002AIX
E0DL3101	PIDR3001AKR	PYDR3001AKR
E0DL3102	PIDR3002AKR	PYDR3002AKR
E0DL3201	PIDR3001AJZ	PYDR3001AJZ
E0DL3202	PIDR3002AJZ	PYDR3002AJZ
E0DL3204	PIDR3004AJZ	PYDR3004AJZ
E0DL3206	PIDR3006AJZ	PYDR3006AJZ
E0DR3201	PIDR3001AEG	PYDR3001AEG
E0DR3202	PIDR3002AEG	PYDR3002AEG
E0DR3204	PIDR3004AEG	PYDR3004AEG
E0DR3206	PIDR3006AEG	PYDR3006AEG
E0DL3302	PIDR3002AKS	PYDR3002AKS
E0DL3304	PIDR3004AKS	PYDR3004AKS
E0DL3306	PIDR3006AKS	PYDR3006AKS
E0DL3308	PIDR3008AKS	PYDR3008AKS
E0DL3310	PIDR3010AKS	PYDR3010AKS
E0DR3302	PIDR3002AGB	PYDR3002AGB
E0DR3304	PIDR3004AGB	PYDR3004AGB
E0DR3306	PIDR3006AGB	PYDR3006AGB
E0DR3308	PIDR3008AGB	PYDR3008AGB
E0DR3310	PIDR3010AGB	PYDR3010AGB

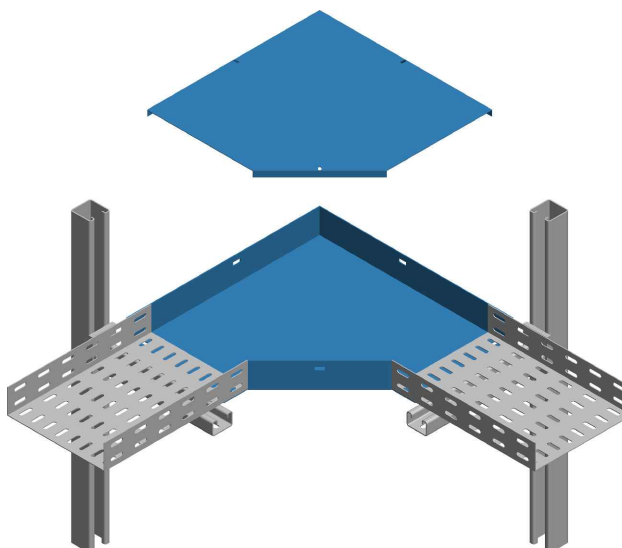
COPERCHIO | COVER

Descr.	h	W	L	Th
CDR-50	12	50	2000	1
CDR-100	12	100	2000	1
CDR-200	12	200	2000	1
CDR-300	12	300	2000	1
CDR-400	12	400	2000	1
CDR-500	12	500	2000	1

CODICE | CODE

HDG	AISI 304	AISI 316
G0DR2001	CIDR2001ACS	CYDR2001ACS
G0DR2002	CIDR2002ACS	CYDR2002ACS
G0DR2004	CIDR2004ACS	CYDR2004ACS
G0DR2006	CIDR2006ACS	CYDR2006ACS
G0DR2008	CIDR2008ACS	CYDR2008ACS
G0DR2010	CIDR2010ACS	CYDR2010ACS

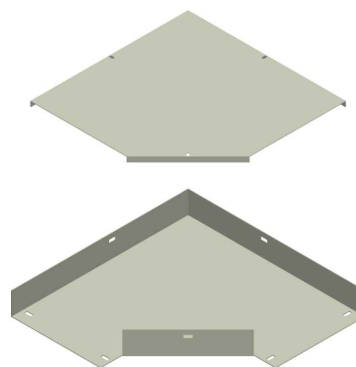
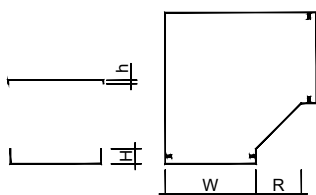
A Richiesta. Materiale: Alluminio - Finitura: Verniciatura - Altezza (H): 50+100 mm - Lunghezza (L): fino a 6000 mm - Spessore (Th): 1,0 - 1,2 - 1,5 - 2 mm - Fondo chiuso.
On request. Material: Aluminium - Finish: Paint job - Height (H): 50+100 mm - Length (L): Until 6000 mm - Thickness (Th): 1,0 - 1,2 - 1,5 - 2 mm - Solid bottom.



[curva piana 90° | 90° horizontal bend]

9

PFL



ELEMENTO | ELEMENT

CODICE | CODE

Descr.	H	W	R	Th
PFL25-C90-1-50	25	50	150	1
PFL25-C90-1-100	25	100	150	1
PFL25-C90-1-50	25	50	150	1,2
PFL25-C90-1-100	25	100	150	1,2
PFL50-C90-1-50	50	50	150	1,2
PFL50-C90-1-100	50	100	150	1,2
PFL50-C90-1-200	50	200	150	1,2
PFL50-C90-1-300	50	300	150	1,2
PFL50-C90-1-50	50	50	150	1,5
PFL50-C90-1-100	50	100	150	1,5
PFL50-C90-1-200	50	200	150	1,5
PFL50-C90-1-300	50	300	150	1,5
PFL75-C90-1-100	75	100	150	1,2
PFL75-C90-1-200	75	200	150	1,2
PFL75-C90-1-300	75	300	150	1,2
PFL75-C90-1-400	75	400	150	1,2
PFL75-C90-1-500	75	500	150	1,2
PFL75-C90-1-100	75	100	150	1,5
PFL75-C90-1-200	75	200	150	1,5
PFL75-C90-1-300	75	300	150	1,5
PFL75-C90-1-400	75	400	150	1,5
PFL75-C90-1-500	75	500	150	1,5

HDG	AISI 304	AISI 316
PZC91001BCS	PIC91001BCS	PYC91001BCS
PZC91002BCS	PIC91002BCS	PYC91002BCS
PZC91001AXQ	PIC91001AXQ	PYC91001AXQ
PZC91002AXQ	PIC91002AXQ	PYC91002AXQ
PZC91001AKA	PIC91001AKA	PYC91001AKA
PZC91002AKA	PIC91002AKA	PYC91002AKA
PZC91004AKA	PIC91004AKA	PYC91004AKA
PZC91006AKA	PIC91006AKA	PYC91006AKA
Ⓢ E0C91201	PIC91001AGD	PYC91001AGD
Ⓢ E0C91202	PIC91002AGD	PYC91002AGD
Ⓢ E0C91204	PIC91004AGD	PYC91004AGD
Ⓢ E0C91206	PIC91006AGD	PYC91006AGD
PZC91002ASO	PIC91002ASO	PYC91002ASO
PZC91004ASO	PIC91004ASO	PYC91004ASO
PZC91006ASO	PIC91006ASO	PYC91006ASO
PZC91008ASO	PIC91008ASO	PYC91008ASO
PZC91010ASO	PIC91010ASO	PYC91010ASO
E0C91302	PIC91002AGC	PYC91002AGC
E0C91304	PIC91004AGC	PYC91004AGC
E0C91306	PIC91006AGC	PYC91006AGC
Ⓢ E0C91308	PIC91008AGC	PYC91008AGC
Ⓢ E0C91310	PIC91010AGC	PYC91010AGC

COPERCHIO | COVER

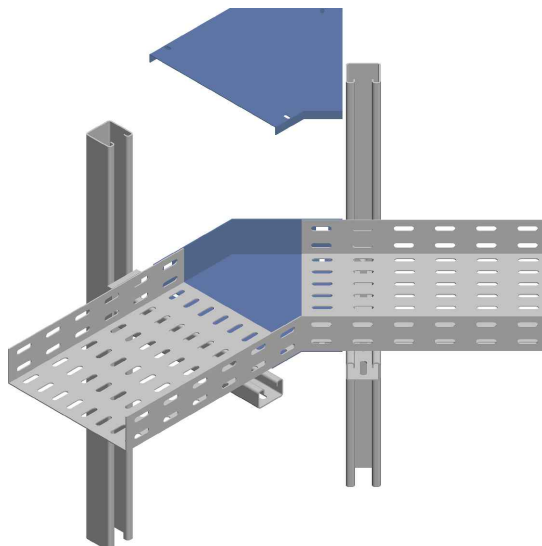
CODICE | CODE

Descr.	h	W	R	Th
PFL-CC90-1-50	12	50	150	1
PFL-CC90-1-100	12	100	150	1
PFL-CC90-1-200	12	200	150	1
PFL-CC90-1-300	12	300	150	1
PFL-CC90-1-400	12	400	150	1
PFL-CC90-1-500	12	500	150	1

HDG	AISI 304	AISI 316
L0C91001	CIC91001AFT	CYC91001AFT
L0C91002	CIC91002AFT	CYC91002AFT
L0C91004	CIC91004AFT	CYC91004AFT
L0C91006	CIC91006AFT	CYC91006AFT
L0C91008	CIC91008AFT	CYC91008AFT
L0C91010	CIC91010AFT	CYC91010AFT

A Richiesta. Materiale: Alluminio - Finitura: Verniciatura - Altezza (H): 50+100 mm - Raggio (R): 100+300 mm - Spessore (Th): 1,0 - 1,2 - 1,5 - 2 mm.
 On request, Material: Aluminium - Finish: Paint job - Height (H): 50+100 mm - Radius (R): 100+300 mm - Thickness (Th): 1,0 - 1,2 - 1,5 - 2 mm.

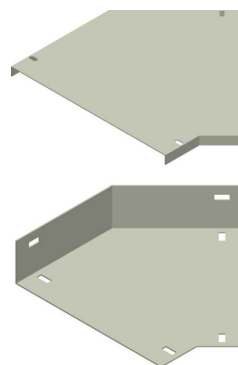
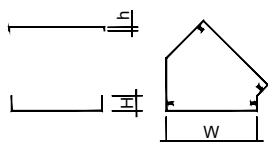
[curva piana 90° | 90° horizontal bend]



10

[curva piana 45° | 45° horizontal bend]

PFL



ELEMENTO | ELEMENT

Descr.	H	W	R	Th
PFL25-C45-1-50	25	50	150	1
PFL25-C45-1-100	25	100	150	1
PFL25-C45-1-50	25	50	150	1,2
PFL25-C45-1-100	25	100	150	1,2
PFL50-C45-1-50	50	50	150	1,2
PFL50-C45-1-100	50	100	150	1,2
PFL50-C45-1-200	50	200	150	1,2
PFL50-C45-1-300	50	300	150	1,2
PFL50-C45-1-50	50	50	150	1,5
PFL50-C45-1-100	50	100	150	1,5
PFL50-C45-1-200	50	200	150	1,5
PFL50-C45-1-300	50	300	150	1,5
PFL75-C45-1-100	75	100	150	1,2
PFL75-C45-1-200	75	200	150	1,2
PFL75-C45-1-300	75	300	150	1,2
PFL75-C45-1-400	75	400	150	1,2
PFL75-C45-1-500	75	500	150	1,2
PFL75-C45-1-100	75	100	150	1,5
PFL75-C45-1-200	75	200	150	1,5
PFL75-C45-1-300	75	300	150	1,5
PFL75-C45-1-400	75	400	150	1,5
PFL75-C45-1-500	75	500	150	1,5

CODICE | CODE

HDG	AISI 304	AISI 316
PZC41001BCS	PIC41001BCS	PYC41001BCS
PZC41002BCS	PIC41002BCS	PYC41002BCS
PZC41001AXQ	PIC41001AXQ	PYC41001AXQ
PZC41002AXQ	PIC41002AXQ	PYC41002AXQ
PZC41001AKA	PIC41001AKA	PYC41001AKA
PZC41002AKA	PIC41002AKA	PYC41002AKA
PZC41004AKA	PIC41004AKA	PYC41004AKA
PZC41006AKA	PIC41006AKA	PYC41006AKA
E0C41201	PIC41001AGD	PYC41001AGD
E0C41202	PIC41002AGD	PYC41002AGD
E0C41204	PIC41004AGD	PYC41004AGD
E0C41206	PIC41006AGD	PYC41006AGD
PZC41002ASO	PIC41002ASO	PYC41002ASO
PZC41004ASO	PIC41004ASO	PYC41004ASO
PZC41006ASO	PIC41006ASO	PYC41006ASO
PZC41008ASO	PIC41008ASO	PYC41008ASO
PZC41010ASO	PIC41010ASO	PYC41010ASO
E0C41302	PIC41002AGC	PYC41002AGC
E0C41304	PIC41004AGC	PYC41004AGC
E0C41306	PIC41006AGC	PYC41006AGC
E0C41308	PIC41008AGC	PYC41008AGC
E0C41310	PIC41010AGC	PYC41010AGC

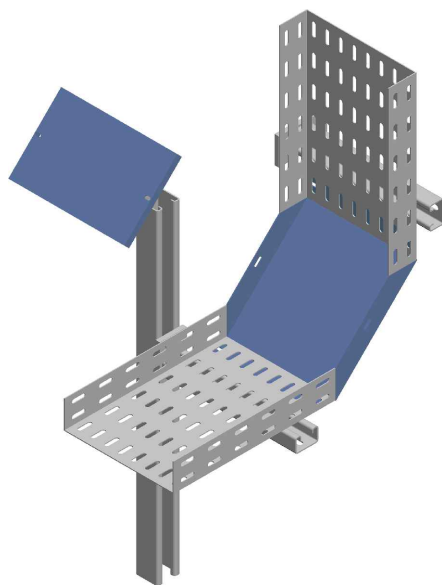
COPERCHIO | COVER

Descr.	h	W	R	Th
PFL-CC45-1-50	12	50	150	1
PFL-CC45-1-100	12	100	150	1
PFL-CC45-1-200	12	200	150	1
PFL-CC45-1-300	12	300	150	1
PFL-CC45-1-400	12	400	150	1
PFL-CC45-1-500	12	500	150	1

CODICE | CODE

HDG	AISI 304	AISI 316
L0C41001	CIC41001AFT	CYC41001AFT
L0C41002	CIC41002AFT	CYC41002AFT
L0C41004	CIC41004AFT	CYC41004AFT
L0C41006	CIC41006AFT	CYC41006AFT
L0C41008	CIC41008AFT	CYC41008AFT
L0C41010	CIC41010AFT	CYC41010AFT

A Richiesta. Materiale: Alluminio - Finitura: Verniciatura - Altezza (H): 50+100 mm - Raggio (R): 100+300 mm - Spessore (Th): 1,0 - 1,2 - 1,5 - 2 mm.
 On request. Material: Aluminium - Finish: Paint job - Height (H): 50+100 mm - Radius (R): 100+300 mm - Thickness (Th): 1,0 - 1,2 - 1,5 - 2 mm.

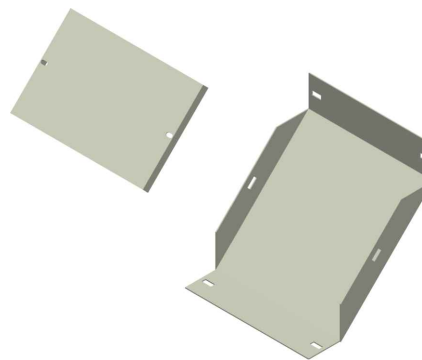
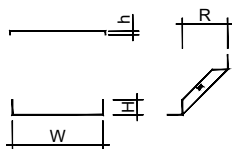


[curva salita 90° | 90° internal vertical bend]

11

PFL

[curva salita 90° | 90° internal vertical bend]



ELEMENTO | ELEMENT

Descr.	H	W	R	Th
PFL25-CS90-1-50	25	50	150	1
PFL25-CS90-1-100	25	100	150	1
PFL25-CS90-1-50	25	50	150	1,2
PFL25-CS90-1-100	25	100	150	1,2
PFL50-CS90-1-50	50	50	150	1,2
PFL50-CS90-1-100	50	100	150	1,2
PFL50-CS90-1-200	50	200	150	1,2
PFL50-CS90-1-300	50	300	150	1,2
PFL50-CS90-1-50	50	50	150	1,5
PFL50-CS90-1-100	50	100	150	1,5
PFL50-CS90-1-200	50	200	150	1,5
PFL50-CS90-1-300	50	300	150	1,5
PFL75-CS90-1-100	75	100	150	1,2
PFL75-CS90-1-200	75	200	150	1,2
PFL75-CS90-1-300	75	300	150	1,2
PFL75-CS90-1-400	75	400	150	1,2
PFL75-CS90-1-500	75	500	150	1,2
PFL75-CS90-1-100	75	100	150	1,5
PFL75-CS90-1-200	75	200	150	1,5
PFL75-CS90-1-300	75	300	150	1,5
PFL75-CS90-1-400	75	400	150	1,5
PFL75-CS90-1-500	75	500	150	1,5

CODICE | CODE

HDG	AISI 304	AISI 316
PZS91001BCT	PIS91001BCT	PYS91001BCT
PZS91002BCT	PIS91002BCT	PYS91002BCT
PZS91001AXQ	PIS91001AXQ	PYS91001AXQ
PZS91002AXQ	PIS91002AXQ	PYS91002AXQ
PZS91001AKA	PIS91001AKA	PYS91001AKA
PZS91002AKA	PIS91002AKA	PYS91002AKA
PZS91004AKA	PIS91004AKA	PYS91004AKA
PZS91006AKA	PIS91006AKA	PYS91006AKA
Ⓢ E0S91201	PIS91001AGD	PYS91001AGD
Ⓢ E0S91202	PIS91002AGD	PYS91002AGD
Ⓢ E0S91204	PIS91004AGD	PYS91004AGD
Ⓢ E0S91206	PIS91006AGD	PYS91006AGD
PZS91002ASO	PIS91002ASO	PYS91002ASO
PZS91004ASO	PIS91004ASO	PYS91004ASO
PZS91006ASO	PIS91006ASO	PYS91006ASO
PZS91008ASO	PIS91008ASO	PYS91008ASO
PZS91010ASO	PIS91010ASO	PYS91010ASO
E0S91302	PIS91002AGC	PYS91002AGC
E0S91304	PIS91004AGC	PYS91004AGC
E0S91306	PIS91006AGC	PYS91006AGC
Ⓢ E0S91308	PIS91008AGC	PYS91008AGC
Ⓢ E0S91310	PIS91010AGC	PYS91010AGC

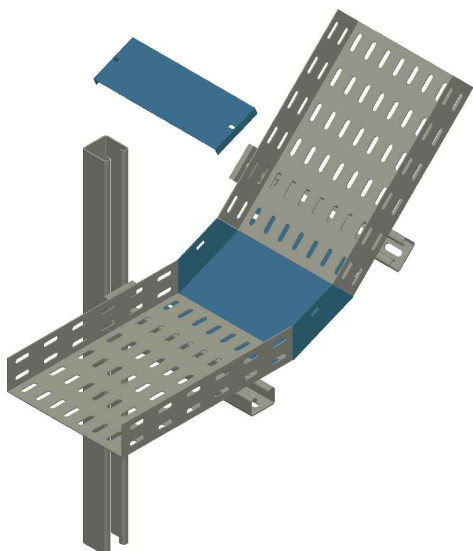
COPERCHIO | COVER

Descr.	h	W	R	Th
PFL25-CCS90-1-50	12	50	150	1
PFL25-CCS90-1-100	12	100	150	1
PFL50-CCS90-1-50	12	50	150	1
PFL50-CCS90-1-100	12	100	150	1
PFL50-CCS90-1-200	12	200	150	1
PFL50-CCS90-1-300	12	300	150	1
PFL75-CCS90-1-100	12	100	150	1
PFL75-CCS90-1-200	12	200	150	1
PFL75-CCS90-1-300	12	300	150	1
PFL75-CCS90-1-400	12	400	150	1
PFL75-CCS90-1-500	12	500	150	1

CODICE | CODE

HDG	AISI 304	AISI 316
L0S91101	CIS91001ALW	CYS91001ALW
L0S91102	CIS91002ALW	CYS91002ALW
L0S91201	CIS91001ADN	CYS91001ADN
L0S91202	CIS91002ADN	CYS91002ADN
L0S91204	CIS91004ADN	CYS91004ADN
L0S91206	CIS91006ADN	CYS91006ADN
L0S91302	CIS91002AEL	CYS91002AEL
L0S91304	CIS91004AEL	CYS91004AEL
L0S91306	CIS91006AEL	CYS91006AEL
L0S91308	CIS91008AEL	CYS91008AEL
L0S91310	CIS91010AEL	CYS91010AEL

A Richiesta. Materiale: Alluminio - Finitura: Verniciatura - Altezza (H): 50+100 mm - Raggio (R): 100+300 mm - Spessore (Th): 1,0 - 1,2 - 1,5 - 2 mm.
On request. Material: Aluminium - Finish: Paint job - Height (H): 50+100 mm - Radius (R): 100+300 mm - Thickness (Th): 1,0 - 1,2 - 1,5 - 2 mm.

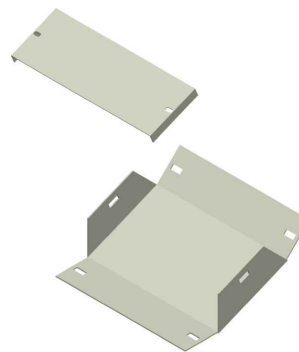
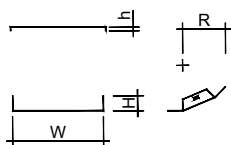


12

[curva salita 45° | 45° internal vertical bend]

PFL

[curva salita 45° | 45° internal vertical bend]



ELEMENTO | ELEMENT

Descr.	H	W	R	Th
PFL25-CS45-1-50	25	50	150	1
PFL25-CS45-1-100	25	100	150	1
PFL25-CS45-1-50	25	50	150	1,2
PFL25-CS45-1-100	25	100	150	1,2
PFL50-CS45-1-50	50	50	150	1,2
PFL50-CS45-1-100	50	100	150	1,2
PFL50-CS45-1-200	50	200	150	1,2
PFL50-CS45-1-300	50	300	150	1,2
PFL50-CS45-1-50	50	50	150	1,5
PFL50-CS45-1-100	50	100	150	1,5
PFL50-CS45-1-200	50	200	150	1,5
PFL50-CS45-1-300	50	300	150	1,5
PFL75-CS45-1-100	75	100	150	1,2
PFL75-CS45-1-200	75	200	150	1,2
PFL75-CS45-1-300	75	300	150	1,2
PFL75-CS45-1-400	75	400	150	1,2
PFL75-CS45-1-500	75	500	150	1,2
PFL75-CS45-1-100	75	100	150	1,5
PFL75-CS45-1-200	75	200	150	1,5
PFL75-CS45-1-300	75	300	150	1,5
PFL75-CS45-1-400	75	400	150	1,5
PFL75-CS45-1-500	75	500	150	1,5

CODICE | CODE

HDG	AISI 304	AISI 316
PZS41001BCT	PIS41001BCT	PYS41001BCT
PZS41002BCT	PIS41002BCT	PYS41002BCT
PZS41001AXQ	PIS41001AXQ	PYS41001AXQ
PZS41002AXQ	PIS41002AXQ	PYS41002AXQ
PZS41001AKA	PIS41001AKA	PYS41001AKA
PZS41002AKA	PIS41002AKA	PYS41002AKA
PZS41004AKA	PIS41004AKA	PYS41004AKA
PZS41006AKA	PIS41006AKA	PYS41006AKA
E0S41201	PIS41001AGD	PYS41001AGD
E0S41202	PIS41002AGD	PYS41002AGD
E0S41204	PIS41004AGD	PYS41004AGD
E0S41206	PIS41006AGD	PYS41006AGD
PZS41002ASO	PIS41002ASO	PYS41002ASO
PZS41004ASO	PIS41004ASO	PYS41004ASO
PZS41006ASO	PIS41006ASO	PYS41006ASO
PZS41008ASO	PIS41008ASO	PYS41008ASO
PZS41010ASO	PIS41010ASO	PYS41010ASO
E0S41302	PIS41002AGC	PYS41002AGC
E0S41304	PIS41004AGC	PYS41004AGC
E0S41306	PIS41006AGC	PYS41006AGC
E0S41308	PIS41008AGC	PYS41008AGC
E0S41310	PIS41010AGC	PYS41010AGC

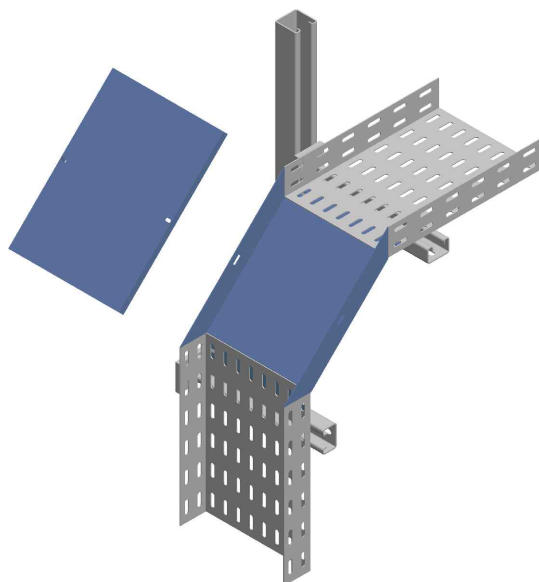
COPERCHIO | COVER

Descr.	h	W	R	Th
PFL25-CCS45-1-50	12	50	150	1
PFL25-CCS45-1-100	12	100	150	1
PFL50-CCS45-1-50	12	50	150	1
PFL50-CCS45-1-100	12	100	150	1
PFL50-CCS45-1-200	12	200	150	1
PFL50-CCS45-1-300	12	300	150	1
PFL75-CCS45-1-100	12	100	150	1
PFL75-CCS45-1-200	12	200	150	1
PFL75-CCS45-1-300	12	300	150	1
PFL75-CCS45-1-400	12	400	150	1
PFL75-CCS45-1-500	12	500	150	1

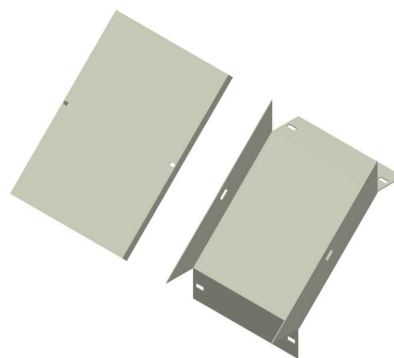
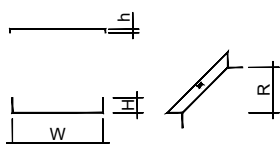
CODICE | CODE

HDG	AISI 304	AISI 316
LOS41101	CIS41001ALW	CYS41001ALW
LOS41102	CIS41002ALW	CYS41002ALW
LOS41201	CIS41001ADN	CYS41001ADN
LOS41202	CIS41002ADN	CYS41002ADN
LOS41204	CIS41004ADN	CYS41004ADN
LOS41206	CIS41006ADN	CYS41006ADN
LOS41302	CIS41002AEL	CYS41002AEL
LOS41304	CIS41004AEL	CYS41004AEL
LOS41306	CIS41006AEL	CYS41006AEL
LOS41308	CIS41008AEL	CYS41008AEL
LOS41310	CIS41010AEL	CYS41010AEL

A Richiesta. Materiale: Alluminio - Finitura: Verniciatura - Altezza (H): 50+100 mm - Raggio (R): 100+300 mm - Spessore (Th): 1,0 - 1,2 - 1,5 - 2 mm.
 On request. Material: Aluminium - Finish: Paint job - Height (H): 50+100 mm - Radius (R): 100+300 mm - Thickness (Th): 1,0 - 1,2 - 1,5 - 2 mm.



[curva discesa 90° | 90° external vertical bend]



ELEMENTO | ELEMENT

CODICE | CODE

Descr.	H	W	R	Th
PFL25-CD90-1-50	25	50	150	1
PFL25-CD90-1-100	25	100	150	1
PFL25-CD90-1-50	25	50	150	1,2
PFL25-CD90-1-100	25	100	150	1,2
PFL50-CD90-1-50	50	50	150	1,2
PFL50-CD90-1-100	50	100	150	1,2
PFL50-CD90-1-200	50	200	150	1,2
PFL50-CD90-1-300	50	300	150	1,2
PFL50-CD90-1-50	50	50	150	1,5
PFL50-CD90-1-100	50	100	150	1,5
PFL50-CD90-1-200	50	200	150	1,5
PFL50-CD90-1-300	50	300	150	1,5
PFL75-CD90-1-100	75	100	150	1,2
PFL75-CD90-1-200	75	200	150	1,2
PFL75-CD90-1-300	75	300	150	1,2
PFL75-CD90-1-400	75	400	150	1,2
PFL75-CD90-1-500	75	500	150	1,2
PFL75-CD90-1-100	75	100	150	1,5
PFL75-CD90-1-200	75	200	150	1,5
PFL75-CD90-1-300	75	300	150	1,5
PFL75-CD90-1-400	75	400	150	1,5
PFL75-CD90-1-500	75	500	150	1,5

HDG	AISI 304	AISI 316
PZD91001BCT	PID91001BCT	PYD91001BCT
PZD91002BCT	PID91002BCT	PYD91002BCT
PZD91001AXQ	PID91001AXQ	PYD91001AXQ
PZD91002AXQ	PID91002AXQ	PYD91002AXQ
PZD91001AKA	PID91001AKA	PYD91001AKA
PZD91002AKA	PID91002AKA	PYD91002AKA
PZD91004AKA	PID91004AKA	PYD91004AKA
PZD91006AKA	PID91006AKA	PYD91006AKA
Ⓢ E0D91201	PID91001AGD	PYD91001AGD
Ⓢ E0D91202	PID91002AGD	PYD91002AGD
Ⓢ E0D91204	PID91004AGD	PYD91004AGD
Ⓢ E0D91206	PID91006AGD	PYD91006AGD
PZD91002ASO	PID91002ASO	PYD91002ASO
PZD91004ASO	PID91004ASO	PYD91004ASO
PZD91006ASO	PID91006ASO	PYD91006ASO
PZD91008ASO	PID91008ASO	PYD91008ASO
PZD91010ASO	PID91010ASO	PYD91010ASO
E0D91302	PID91002AGC	PYD91002AGC
E0D91304	PID91004AGC	PYD91004AGC
E0D91306	PID91006AGC	PYD91006AGC
Ⓢ E0D91308	PID91008AGC	PYD91008AGC
Ⓢ E0D91310	PID91010AGC	PYD91010AGC

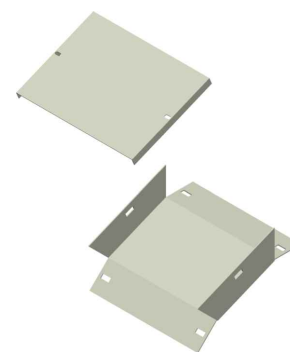
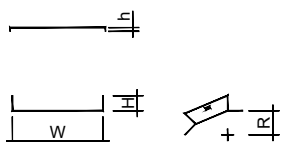
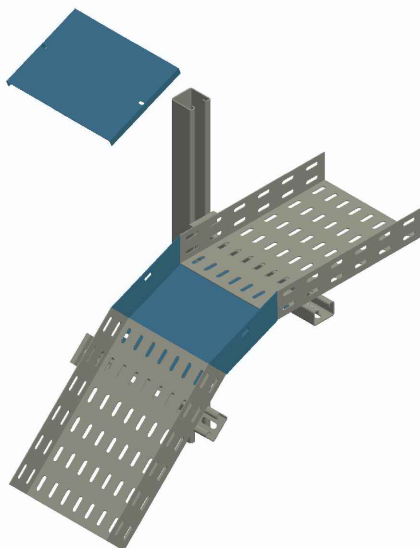
COPERCHIO | COVER

CODICE | CODE

Descr.	h	W	R	Th
PFL25-CCD90-1-50	12	50	150	1
PFL25-CCD90-1-100	12	100	150	1
PFL50-CCD90-1-50	12	50	150	1
PFL50-CCD90-1-100	12	100	150	1
PFL50-CCD90-1-200	12	200	150	1
PFL50-CCD90-1-300	12	300	150	1
PFL75-CCD90-1-100	12	100	150	1
PFL75-CCD90-1-200	12	200	150	1
PFL75-CCD90-1-300	12	300	150	1
PFL75-CCD90-1-400	12	400	150	1
PFL75-CCD90-1-500	12	500	150	1

HDG	AISI 304	AISI 316
L0D91101	CID91001ALW	CYD91001ALW
L0D91102	CID91002ALW	CYD91002ALW
L0D91201	CID91001ADN	CYD91001ADN
L0D91202	CID91002ADN	CYD91002ADN
L0D91204	CID91004ADN	CYD91004ADN
L0D91206	CID91006ADN	CYD91006ADN
L0D91302	CID91002AEL	CYD91002AEL
L0D91304	CID91004AEL	CYD91004AEL
L0D91306	CID91006AEL	CYD91006AEL
L0D91308	CID91008AEL	CYD91008AEL
L0D91310	CID91010AEL	CYD91010AEL

A Richiesta. Materiale: Alluminio - Finitura: Verniciatura - Altezza (H): 50+100 mm - Raggio (R): 100+300 mm - Spessore (Th): 1,0 - 1,2 - 1,5 - 2 mm.
 On request. Material: Aluminium - Finish: Paint job - Height (H): 50+100 mm - Radius (R): 100+300 mm - Thickness (Th): 1,0 - 1,2 - 1,5 - 2 mm.



ELEMENTO | ELEMENT

Descr.	H	W	R	Th
PFL25-CD45-1-50	25	50	150	1
PFL25-CD45-1-100	25	100	150	1
PFL25-CD45-1-50	25	50	150	1,2
PFL25-CD45-1-100	25	100	150	1,2
PFL50-CD45-1-50	50	50	150	1,2
PFL50-CD45-1-100	50	100	150	1,2
PFL50-CD45-1-200	50	200	150	1,2
PFL50-CD45-1-300	50	300	150	1,2
PFL50-CD45-1-50	50	50	150	1,5
PFL50-CD45-1-100	50	100	150	1,5
PFL50-CD45-1-200	50	200	150	1,5
PFL50-CD45-1-300	50	300	150	1,5
PFL75-CD45-1-100	75	100	150	1,2
PFL75-CD45-1-200	75	200	150	1,2
PFL75-CD45-1-300	75	300	150	1,2
PFL75-CD45-1-400	75	400	150	1,2
PFL75-CD45-1-500	75	500	150	1,2
PFL75-CD45-1-100	75	100	150	1,5
PFL75-CD45-1-200	75	200	150	1,5
PFL75-CD45-1-300	75	300	150	1,5
PFL75-CD45-1-400	75	400	150	1,5
PFL75-CD45-1-500	75	500	150	1,5

CODICE | CODE

HDG	AISI 304	AISI 316
PZD41001BCT	PID41001BCT	PYD41001BCT
PZD41002BCT	PID41002BCT	PYD41002BCT
PZD41001AXQ	PID41001AXQ	PYD41001AXQ
PZD41002AXQ	PID41002AXQ	PYD41002AXQ
PZD41001AKA	PID41001AKA	PYD41001AKA
PZD41002AKA	PID41002AKA	PYD41002AKA
PZD41004AKA	PID41004AKA	PYD41004AKA
PZD41006AKA	PID41006AKA	PYD41006AKA
E0D41201	PID41001AGD	PYD41001AGD
E0D41202	PID41002AGD	PYD41002AGD
E0D41204	PID41004AGD	PYD41004AGD
E0D41206	PID41006AGD	PYD41006AGD
PZD41002ASO	PID41002ASO	PYD41002ASO
PZD41004ASO	PID41004ASO	PYD41004ASO
PZD41006ASO	PID41006ASO	PYD41006ASO
PZD41008ASO	PID41008ASO	PYD41008ASO
PZD41010ASO	PID41010ASO	PYD41010ASO
E0D41302	PID41002AGC	PYD41002AGC
E0D41304	PID41004AGC	PYD41004AGC
E0D41306	PID41006AGC	PYD41006AGC
E0D41308	PID41008AGC	PYD41008AGC
E0D41310	PID41010AGC	PYD41010AGC

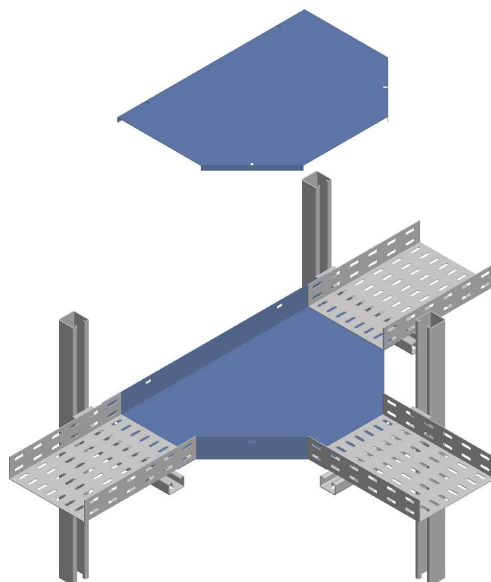
COPERCHIO | COVER

Descr.	h	W	R	Th
PFL25-CCD45-1-50	12	50	150	1
PFL25-CCD45-1-100	12	100	150	1
PFL50-CCD45-1-50	12	50	150	1
PFL50-CCD45-1-100	12	100	150	1
PFL50-CCD45-1-200	12	200	150	1
PFL50-CCD45-1-300	12	300	150	1
PFL75-CCD45-1-100	12	100	150	1
PFL75-CCD45-1-200	12	200	150	1
PFL75-CCD45-1-300	12	300	150	1
PFL75-CCD45-1-400	12	400	150	1
PFL75-CCD45-1-500	12	500	150	1

CODICE | CODE

HDG	AISI 304	AISI 316
L0D41101	CID41001ALW	CYD41001ALW
L0D41102	CID41002ALW	CYD41002ALW
L0D41201	CID41001ADN	CYD41001ADN
L0D41202	CID41002ADN	CYD41002ADN
L0D41204	CID41004ADN	CYD41004ADN
L0D41206	CID41006ADN	CYD41006ADN
L0D41302	CID41002AEL	CYD41002AEL
L0D41304	CID41004AEL	CYD41004AEL
L0D41306	CID41006AEL	CYD41006AEL
L0D41308	CID41008AEL	CYD41008AEL
L0D41310	CID41010AEL	CYD41010AEL

A Richiesta. Materiale: Alluminio - Finitura: Verniciatura - Altezza (H): 50+100 mm - Raggio (R): 100+300 mm - Spessore (Th): 1,0 - 1,2 - 1,5 - 2 mm.
 On request. Material: Aluminium - Finish: Paint job - Height (H): 50+100 mm - Radius (R): 100+300 mm - Thickness (Th): 1,0 - 1,2 - 1,5 - 2 mm.

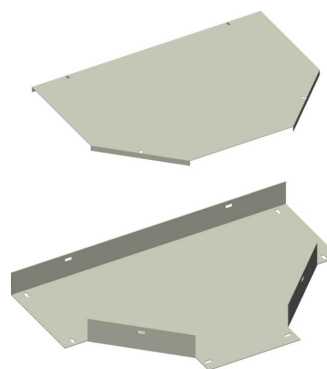
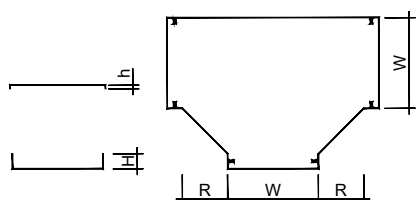


[derivazione T | tee]

15

PFL

[derivazione T | tee]



ELEMENTO | ELEMENT

CODICE | CODE

Descr.	H	W	R	Th
PFL25-T-1-50	25	50	150	1
PFL25-T-1-100	25	100	150	1
PFL25-T-1-50	25	50	150	1,2
PFL25-T-1-100	25	100	150	1,2
PFL50-T-1-50	50	50	150	1,2
PFL50-T-1-100	50	100	150	1,2
PFL50-T-1-200	50	200	150	1,2
PFL50-T-1-300	50	300	150	1,2
PFL50-T-1-50	50	50	150	1,5
PFL50-T-1-100	50	100	150	1,5
PFL50-T-1-200	50	200	150	1,5
PFL50-T-1-300	50	300	150	1,5
PFL75-T-1-100	75	100	150	1,2
PFL75-T-1-200	75	200	150	1,2
PFL75-T-1-300	75	300	150	1,2
PFL75-T-1-400	75	400	150	1,2
PFL75-T-1-500	75	500	150	1,2
PFL75-T-1-100	75	100	150	1,5
PFL75-T-1-200	75	200	150	1,5
PFL75-T-1-300	75	300	150	1,5
PFL75-T-1-400	75	400	150	1,5
PFL75-T-1-500	75	500	150	1,5

HDG	AISI 304	AISI 316
PZT01001BCS	PIT01001BCS	PYT01001BCS
PZT01002BCS	PIT01002BCS	PYT01002BCS
PZT01001AXQ	PIT01001AXQ	PYT01001AXQ
PZT01002AXQ	PIT01002AXQ	PYT01002AXQ
PZT01001AKA	PIT01001AKA	PYT01001AKA
PZT01002AKA	PIT01002AKA	PYT01002AKA
PZT01004AKA	PIT01004AKA	PYT01004AKA
PZT01006AKA	PIT01006AKA	PYT01006AKA
Ⓢ E0T01201	PIT01001AGD	PYT01001AGD
Ⓢ E0T01202	PIT01002AGD	PYT01002AGD
Ⓢ E0T01204	PIT01004AGD	PYT01004AGD
Ⓢ E0T01206	PIT01006AGD	PYT01006AGD
PZT01002ASO	PIT01002ASO	PYT01002ASO
PZT01004ASO	PIT01004ASO	PYT01004ASO
PZT01006ASO	PIT01006ASO	PYT01006ASO
PZT01008ASO	PIT01008ASO	PYT01008ASO
PZT01010ASO	PIT01010ASO	PYT01010ASO
E0T01302	PIT01002AGC	PYT01002AGC
E0T01304	PIT01004AGC	PYT01004AGC
E0T01306	PIT01006AGC	PYT01006AGC
Ⓢ E0T01308	PIT01008AGC	PYT01008AGC
Ⓢ E0T01310	PIT01010AGC	PYT01010AGC

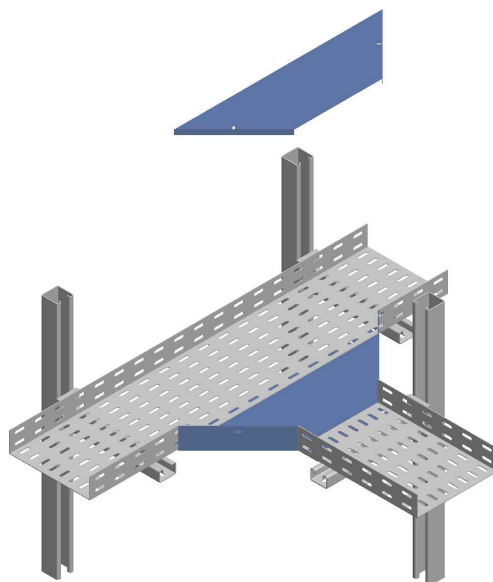
COPERCHIO | COVER

CODICE | CODE

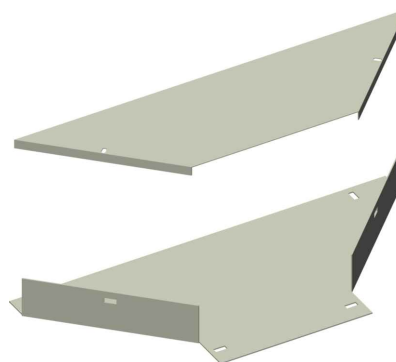
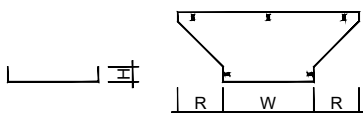
Descr.	h	W	R	Th
PFL-CT-1-50	12	50	150	1
PFL-CT-1-100	12	100	150	1
PFL-CT-1-200	12	200	150	1
PFL-CT-1-300	12	300	150	1
PFL-CT-1-400	12	400	150	1
PFL-CT-1-500	12	500	150	1

HDG	AISI 304	AISI 316
L0T01001	CIT01001AFT	CYT01001AFT
L0T01002	CIT01002AFT	CYT01002AFT
L0T01004	CIT01004AFT	CYT01004AFT
L0T01006	CIT01006AFT	CYT01006AFT
L0T01008	CIT01008AFT	CYT01008AFT
L0T01010	CIT01010AFT	CYT01010AFT

A Richiesta. Materiale: Alluminio - Finitura: Verniciatura - Altezza (H): 50+100 mm - Raggio (R): 100+300 mm - Spessore (Th): 1,0 - 1,2 - 1,5 - 2 mm.
On request. Material: Aluminium - Finish: Paint job - Height (H): 50+100 mm - Radius (R): 100+300 mm - Thickness (Th): 1,0 - 1,2 - 1,5 - 2 mm.



16 [derivazione T laterale | lateral tee]



ELEMENTO | ELEMENT

Descr.	H	W	R	Th
PFL25-TL-1-50	25	50	150	1
PFL25-TL-1-100	25	100	150	1
PFL25-TL-1-50	25	50	150	1,2
PFL25-TL-1-100	25	100	150	1,2
PFL50-TL-1-50	50	50	150	1,2
PFL50-TL-1-100	50	100	150	1,2
PFL50-TL-1-200	50	200	150	1,2
PFL50-TL-1-300	50	300	150	1,2
PFL50-TL-1-50	50	50	150	1,5
PFL50-TL-1-100	50	100	150	1,5
PFL50-TL-1-200	50	200	150	1,5
PFL50-TL-1-300	50	300	150	1,5
PFL75-TL-1-100	75	100	150	1,2
PFL75-TL-1-200	75	200	150	1,2
PFL75-TL-1-300	75	300	150	1,2
PFL75-TL-1-400	75	400	150	1,2
PFL75-TL-1-500	75	500	150	1,2
PFL75-TL-1-100	75	100	150	1,5
PFL75-TL-1-200	75	200	150	1,5
PFL75-TL-1-300	75	300	150	1,5
PFL75-TL-1-400	75	400	150	1,5
PFL75-TL-1-500	75	500	150	1,5

CODICE | CODE

HDG	AISI 304	AISI 316
PZTL1001BCS	PITL1001BCS	PYTL1001BCS
PZTL1002BCS	PITL1002BCS	PYTL1002BCS
PZTL1001AXQ	PITL1001AXQ	PYTL1001AXQ
PZTL1002AXQ	PITL1002AXQ	PYTL1002AXQ
PZTL1001AKA	PITL1001AKA	PYTL1001AKA
PZTL1002AKA	PITL1002AKA	PYTL1002AKA
PZTL1004AKA	PITL1004AKA	PYTL1004AKA
PZTL1006AKA	PITL1006AKA	PYTL1006AKA
E0TL1201	PITL1001AGD	PYTL1001AGD
E0TL1202	PITL1002AGD	PYTL1002AGD
E0TL1204	PITL1004AGD	PYTL1004AGD
E0TL1206	PITL1006AGD	PYTL1006AGD
PZTL1002ASO	PITL1002ASO	PYTL1002ASO
PZTL1004ASO	PITL1004ASO	PYTL1004ASO
PZTL1006ASO	PITL1006ASO	PYTL1006ASO
PZTL1008ASO	PITL1008ASO	PYTL1008ASO
PZTL1010ASO	PITL1010ASO	PYTL1010ASO
E0TL1302	PITL1002AGC	PYTL1002AGC
E0TL1304	PITL1004AGC	PYTL1004AGC
E0TL1306	PITL1006AGC	PYTL1006AGC
E0TL1308	PITL1008AGC	PYTL1008AGC
E0TL1310	PITL1010AGC	PYTL1010AGC

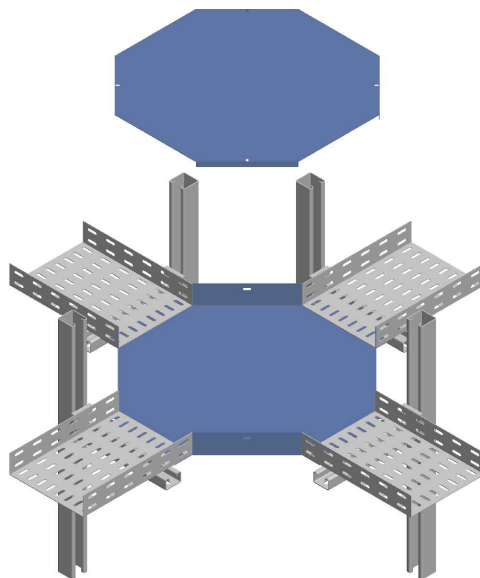
COPERCHIO | COVER

Descr.	h	W	R	Th
PFL-CTL-1-50	12	50	150	1
PFL-CTL-1-100	12	100	150	1
PFL-CTL-1-200	12	200	150	1
PFL-CTL-1-300	12	300	150	1
PFL-CTL-1-400	12	400	150	1
PFL-CTL-1-500	12	500	150	1

CODICE | CODE

HDG	AISI 304	AISI 316
L0TL1001	CITL1001AFT	CYTL1001AFT
L0TL1002	CITL1002AFT	CYTL1002AFT
L0TL1004	CITL1004AFT	CYTL1004AFT
L0TL1006	CITL1006AFT	CYTL1006AFT
L0TL1008	CITL1008AFT	CYTL1008AFT
L0TL1010	CITL1010AFT	CYTL1010AFT

A Richiesta. Materiale: Alluminio - Finitura: Verniciatura - Altezza (H): 50+100 mm - Raggio (R): 100+300 mm - Spessore (Th): 1,0 - 1,2 - 1,5 - 2 mm.
On request. Material: Aluminium - Finish: Paint job - Height (H): 50+100 mm - Radius (R): 100+300 mm - Thickness (Th): 1,0 - 1,2 - 1,5 - 2 mm.

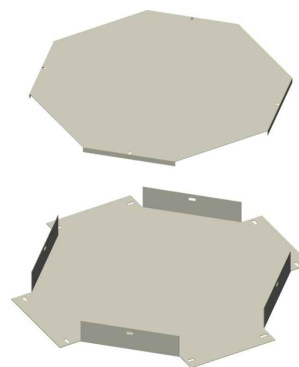
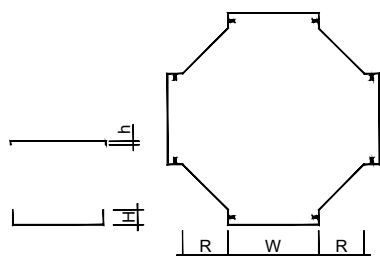


[incrocio | cross]

17

PFL

[incrocio | cross]



ELEMENTO | ELEMENT

CODICE | CODE

Descr.	H	W	R	Th
PFL25-X-1-50	25	50	150	1
PFL25-X-1-100	25	100	150	1
PFL25-X-1-50	25	50	150	1,2
PFL25-X-1-100	25	100	150	1,2
PFL50-X-1-50	50	50	150	1,2
PFL50-X-1-100	50	100	150	1,2
PFL50-X-1-200	50	200	150	1,2
PFL50-X-1-300	50	300	150	1,2
PFL50-X-1-50	50	50	150	1,5
PFL50-X-1-100	50	100	150	1,5
PFL50-X-1-200	50	200	150	1,5
PFL50-X-1-300	50	300	150	1,5
PFL75-X-1-100	75	100	150	1,2
PFL75-X-1-200	75	200	150	1,2
PFL75-X-1-300	75	300	150	1,2
PFL75-X-1-400	75	400	150	1,2
PFL75-X-1-500	75	500	150	1,2
PFL75-X-1-100	75	100	150	1,5
PFL75-X-1-200	75	200	150	1,5
PFL75-X-1-300	75	300	150	1,5
PFL75-X-1-400	75	400	150	1,5
PFL75-X-1-500	75	500	150	1,5

HDG	AISI 304	AISI 316
PZX01001BCS	PIX01001BCS	PYX01001BCS
PZX01002BCS	PIX01002BCS	PYX01002BCS
PZX01001AXQ	PIX01001AXQ	PYX01001AXQ
PZX01002AXQ	PIX01002AXQ	PYX01002AXQ
PZX01001AKA	PIX01001AKA	PYX01001AKA
PZX01002AKA	PIX01002AKA	PYX01002AKA
PZX01004AKA	PIX01004AKA	PYX01004AKA
PZX01006AKA	PIX01006AKA	PYX01006AKA
E0X01201	PIX01001AGD	PYX01001AGD
E0X01202	PIX01002AGD	PYX01002AGD
E0X01204	PIX01004AGD	PYX01004AGD
E0X01206	PIX01006AGD	PYX01006AGD
PZX01002ASO	PIX01002ASO	PYX01002ASO
PZX01004ASO	PIX01004ASO	PYX01004ASO
PZX01006ASO	PIX01006ASO	PYX01006ASO
PZX01008ASO	PIX01008ASO	PYX01008ASO
PZX01010ASO	PIX01010ASO	PYX01010ASO
E0X01302	PIX01002AGC	PYX01002AGC
E0X01304	PIX01004AGC	PYX01004AGC
E0X01306	PIX01006AGC	PYX01006AGC
E0X01308	PIX01008AGC	PYX01008AGC
E0X01310	PIX01010AGC	PYX01010AGC

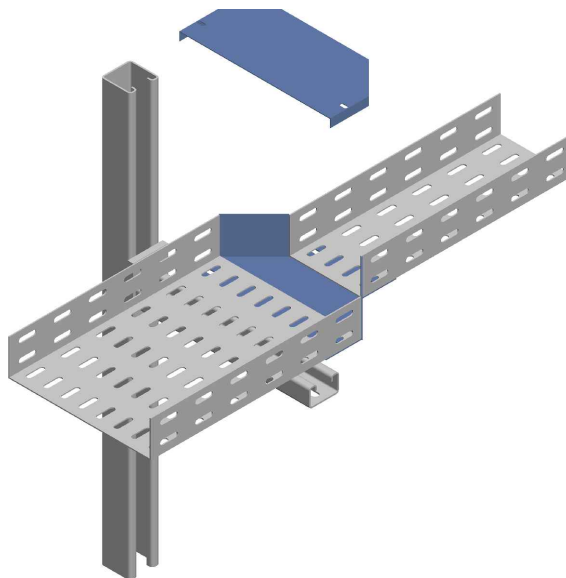
COPERCHIO | COVER

CODICE | CODE

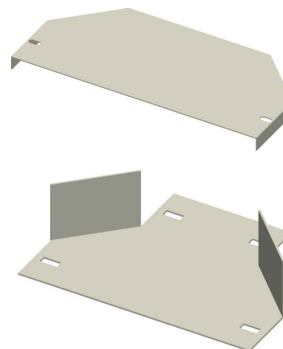
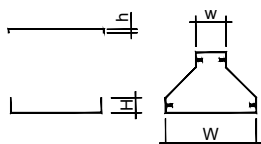
Descr.	h	W	R	Th
PFL-CX-1-50	12	50	150	1
PFL-CX-1-100	12	100	150	1
PFL-CX-1-200	12	200	150	1
PFL-CX-1-300	12	300	150	1
PFL-CX-1-400	12	400	150	1
PFL-CX-1-500	12	500	150	1

HDG	AISI 304	AISI 316
L0X01001	CIX01001AFT	CYX01001AFT
L0X01002	CIX01002AFT	CYX01002AFT
L0X01004	CIX01004AFT	CYX01004AFT
L0X01006	CIX01006AFT	CYX01006AFT
L0X01008	CIX01008AFT	CYX01008AFT
L0X01010	CIX01010AFT	CYX01010AFT

A Richiesta. Materiale: Alluminio - Finitura: Verniciatura - Altezza (H): 50+100 mm - Raggio (R): 100+300 mm - Spessore (Th): 1,0 - 1,2 - 1,5 - 2 mm.
On request. Material: Aluminium - Finish: Paint job - Height (H): 50+100 mm - Radius (R): 100+300 mm - Thickness (Th): 1,0 - 1,2 - 1,5 - 2 mm.



[riduzione centrale | central reduction]



ELEMENTO | ELEMENT

Descr.	H	W	w	L	Th
PFL25-RC-100/50	25	100	50	125	1
PFL25-RC-100/50	25	100	50	125	1,2
PFL50-RC-100/50	50	100	50	125	1,2
PFL50-RC-200/100	50	200	100	150	1,2
PFL50-RC-300/100	50	300	100	200	1,2
PFL50-RC-300/200	50	300	200	150	1,2
PFL50-RC-100/50	50	100	50	125	1,5
PFL50-RC-200/100	50	200	100	150	1,5
PFL50-RC-300/100	50	300	100	200	1,5
PFL50-RC-300/200	50	300	200	150	1,5
PFL75-RC-200/100	75	200	100	150	1,2
PFL75-RC-300/100	75	300	100	200	1,2
PFL75-RC-300/200	75	300	200	150	1,2
PFL75-RC-400/100	75	400	100	250	1,2
PFL75-RC-400/200	75	400	200	200	1,2
PFL75-RC-400/300	75	400	300	150	1,2
PFL75-RC-500/100	75	500	100	300	1,2
PFL75-RC-500/200	75	500	200	250	1,2
PFL75-RC-500/300	75	500	300	200	1,2
PFL75-RC-500/400	75	500	400	150	1,2
PFL75-RC-200/100	75	200	100	150	1,5
PFL75-RC-300/100	75	300	100	200	1,5
PFL75-RC-300/200	75	300	200	150	1,5
PFL75-RC-400/100	75	400	100	250	1,5
PFL75-RC-400/200	75	400	200	200	1,5
PFL75-RC-400/300	75	400	300	150	1,5
PFL75-RC-500/100	75	500	100	300	1,5
PFL75-RC-500/200	75	500	200	250	1,5
PFL75-RC-500/300	75	500	300	200	1,5
PFL75-RC-500/400	75	500	400	150	1,5

CODICE | CODE

HDG	AISI 304	AISI 316
PZRC0201BCS	PIRC0201BCS	PYRC0201BCS
PZRC0201AXQ	PIRC0201AXQ	PYRC0201AXQ
PZRC0201AKA	PIRC0402AKA	PYRC0402AKA
PZRC0402AKA	PIRC0602AKA	PYRC0602AKA
PZRC0602AKA	PIRC0402AKA	PYRC0402AKA
PZRC0604AKA	PIRC0602AKA	PYRC0602AKA
E2RC0201	PIRC0402AGD	PYRC0402AGD
E2RC0402	PIRC0602AGD	PYRC0602AGD
E2RC0602	PIRC0402AGD	PYRC0402AGD
E2RC0604	PIRC0602AGD	PYRC0602AGD
PZRC0402ASO	PIRC0402ASO	PYRC0402ASO
PZRC0602ASO	PIRC0602ASO	PYRC0602ASO
PZRC0604ASO	PIRC0402ASO	PYRC0402ASO
PZRC0802ASO	PIRC0602ASO	PYRC0602ASO
PZRC0804ASO	PIRC0402ASO	PYRC0402ASO
PZRC0806ASO	PIRC0602ASO	PYRC0602ASO
PZRC1002ASO	PIRC0402ASO	PYRC0402ASO
PZRC1004ASO	PIRC0602ASO	PYRC0602ASO
PZRC1006ASO	PIRC0402ASO	PYRC0402ASO
PZRC1008ASO	PIRC0602ASO	PYRC0602ASO
E3RC0402	PIRC0402AGC	PYRC0402AGC
E3RC0602	PIRC0602AGC	PYRC0602AGC
E3RC0604	PIRC0402AGC	PYRC0402AGC
E3RC0802	PIRC0602AGC	PYRC0602AGC
E3RC0804	PIRC0402AGC	PYRC0402AGC
E3RC0806	PIRC0602AGC	PYRC0602AGC
E3RC1002	PIRC0402AGC	PYRC0402AGC
E3RC1004	PIRC0602AGC	PYRC0602AGC
E3RC1006	PIRC0402AGC	PYRC0402AGC
E3RC1008	PIRC0602AGC	PYRC0602AGC

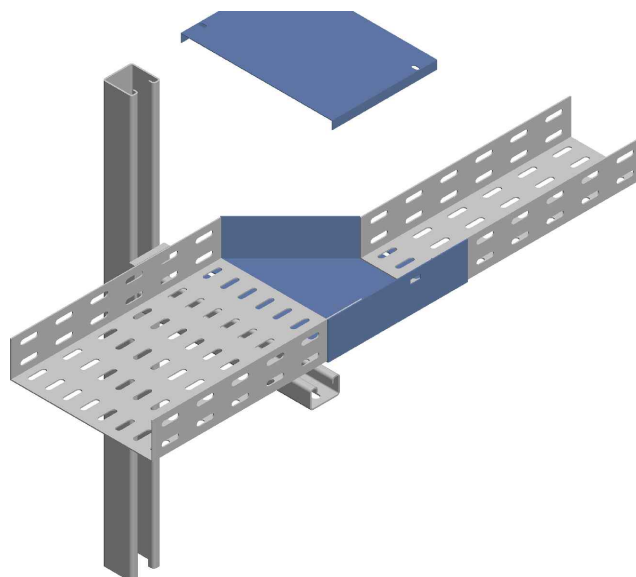
COPERCHIO | COVER

Descr.	h	W	w	Th
PFL-CRC-100/50	12	100	50	1
PFL-CRC-200/100	12	200	100	1
PFL-CRC-300/100	12	300	100	1
PFL-CRC-300/200	12	300	200	1
PFL-CRC-400/100	12	400	100	1
PFL-CRC-400/200	12	400	200	1
PFL-CRC-400/300	12	400	300	1
PFL-CRC-500/100	12	500	100	1
PFL-CRC-500/200	12	500	200	1
PFL-CRC-500/300	12	500	300	1
PFL-CRC-500/400	12	500	400	1

CODICE | CODE

HDG	AISI 304	AISI 316
L0RC0201	CIRC0402AFT	CYRC0402AFT
L0RC0402	CIRC0602AFT	CYRC0602AFT
L0RC0602	CIRC0604AFT	CYRC0604AFT
L0RC0604	CIRC0802AFT	CYRC0802AFT
L0RC0802	CIRC0804AFT	CYRC0804AFT
L0RC0804	CIRC0806AFT	CYRC0806AFT
L0RC0806	CIRC1002AFT	CYRC1002AFT
L0RC1002	CIRC1004AFT	CYRC1004AFT
L0RC1004	CIRC1006AFT	CYRC1006AFT
L0RC1006	CIRC1008AFT	CYRC1008AFT
L0RC1008	CIRC1202AFT	CYRC1202AFT

A Richiesta. Materiale: Alluminio - Finitura: Verniciatura - Altezza (H): 50+100 mm - Spessore (Th): 1,0 - 1,2 - 1,5 - 2 mm.
 On request. Material: Aluminium - Finish: Paint job - Height (H): 50+100 mm - Thickness (Th): 1,0 - 1,2 - 1,5 - 2 mm.

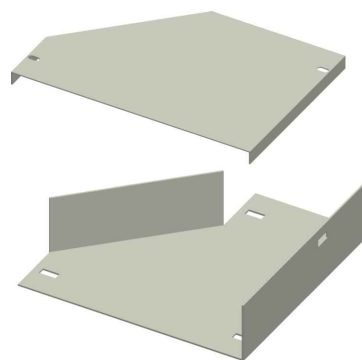
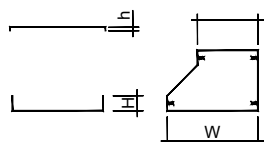


[riduzione destra | right reduction]

19

PFL

[riduzione destra | right reduction]



ELEMENTO | ELEMENT

CODICE | CODE

Descr.	H	W	w	L	Th
PFL25-RD-100/50	25	100	50	150	1
PFL25-RD-100/50	25	100	50	150	1,2
PFL50-RD-100/50	50	100	50	150	1,2
PFL50-RD-200/100	50	200	100	200	1,2
PFL50-RD-300/100	50	300	100	300	1,2
PFL50-RD-300/200	50	300	200	200	1,2
PFL50-RD-100/50	50	100	50	150	1,5
PFL50-RD-200/100	50	200	100	200	1,5
PFL50-RD-300/100	50	300	100	300	1,5
PFL50-RD-300/200	50	300	200	200	1,5
PFL75-RD-200/100	75	200	100	200	1,2
PFL75-RD-300/100	75	300	100	300	1,2
PFL75-RD-300/200	75	300	200	200	1,2
PFL75-RD-400/100	75	400	100	400	1,2
PFL75-RD-400/200	75	400	200	300	1,2
PFL75-RD-400/300	75	400	300	200	1,2
PFL75-RD-500/100	75	500	100	500	1,2
PFL75-RD-500/200	75	500	200	400	1,2
PFL75-RD-500/300	75	500	300	300	1,2
PFL75-RD-500/400	75	500	400	200	1,2
PFL75-RD-200/100	75	200	100	200	1,5
PFL75-RD-300/100	75	300	100	300	1,5
PFL75-RD-300/200	75	300	200	200	1,5
PFL75-RD-400/100	75	400	100	400	1,5
PFL75-RD-400/200	75	400	200	300	1,5
PFL75-RD-400/300	75	400	300	200	1,5
PFL75-RD-500/100	75	500	100	500	1,5
PFL75-RD-500/200	75	500	200	400	1,5
PFL75-RD-500/300	75	500	300	300	1,5
PFL75-RD-500/400	75	500	400	200	1,5

HDG	AISI 304	AISI 316
PZRD0201BCS	PIRD0201BCS	PYRD0201BCS
PZRD0201AXQ	PIRD0201AXQ	PYRD0201AXQ
PZRD0201AKA	PIRD0402AKA	PYRD0402AKA
PZRD0402AKA	PIRD0602AKA	PYRD0602AKA
PZRD0602AKA	PIRD0402AKA	PYRD0402AKA
PZRD0604AKA	PIRD0602AKA	PYRD0602AKA
E2RD0201	PIRD0402AGD	PYRD0402AGD
E2RD0402	PIRD0602AGD	PYRD0602AGD
E2RD0602	PIRD0402AGD	PYRD0402AGD
E2RD0604	PIRD0602AGD	PYRD0602AGD
🌱 PZRD0402ASO	PIRD0402ASO	PYRD0402ASO
🌱 PZRD0602ASO	PIRD0602ASO	PYRD0602ASO
🌱 PZRD0604ASO	PIRD0402ASO	PYRD0402ASO
🌱 PZRD0802ASO	PIRD0602ASO	PYRD0602ASO
PZRD0804ASO	PIRD0402ASO	PYRD0402ASO
PZRD0806ASO	PIRD0602ASO	PYRD0602ASO
PZRD1002ASO	PIRD0402ASO	PYRD0402ASO
PZRD1004ASO	PIRD0602ASO	PYRD0602ASO
PZRD1006ASO	PIRD0402ASO	PYRD0402ASO
PZRD1008ASO	PIRD0602ASO	PYRD0602ASO
E3RD0402	PIRD0402AGC	PYRD0402AGC
E3RD0602	PIRD0602AGC	PYRD0602AGC
E3RD0604	PIRD0402AGC	PYRD0402AGC
🌱 E3RD0802	PIRD0602AGC	PYRD0602AGC
🌱 E3RD0804	PIRD0402AGC	PYRD0402AGC
🌱 E3RD0806	PIRD0602AGC	PYRD0602AGC
🌱 E3RD1002	PIRD0402AGC	PYRD0402AGC
🌱 E3RD1004	PIRD0602AGC	PYRD0602AGC
🌱 E3RD1006	PIRD0402AGC	PYRD0402AGC
🌱 E3RD1008	PIRD0602AGC	PYRD0602AGC

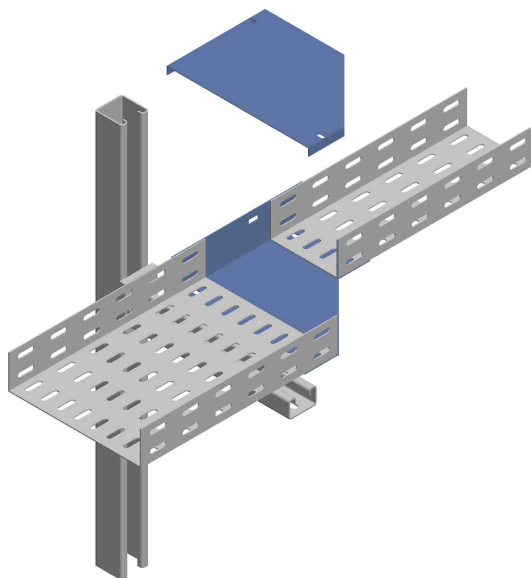
COPERCHIO | COVER

CODICE | CODE

Descr.	h	W	w	Th
PFL-CRD-100/50	12	100	50	1
PFL-CRD-200/100	12	200	100	1
PFL-CRD-300/100	12	300	100	1
PFL-CRD-300/200	12	300	200	1
PFL-CRD-400/100	12	400	100	1
PFL-CRD-400/200	12	400	200	1
PFL-CRD-400/300	12	400	300	1
PFL-CRD-500/100	12	500	100	1
PFL-CRD-500/200	12	500	200	1
PFL-CRD-500/300	12	500	300	1
PFL-CRD-500/400	12	500	400	1

HDG	AISI 304	AISI 316
L0RD0201	CIRD0402AFT	CYRD0402AFT
L0RD0402	CIRD0602AFT	CYRD0602AFT
L0RD0602	CIRD0604AFT	CYRD0604AFT
L0RD0604	CIRD0802AFT	CYRD0802AFT
L0RD0802	CIRD0804AFT	CYRD0804AFT
L0RD0804	CIRD0806AFT	CYRD0806AFT
L0RD0806	CIRD1002AFT	CYRD1002AFT
L0RD1002	CIRD1004AFT	CYRD1004AFT
L0RD1004	CIRD1006AFT	CYRD1006AFT
L0RD1006	CIRD1008AFT	CYRD1008AFT
L0RD1008	CIRD1202AFT	CYRD1202AFT

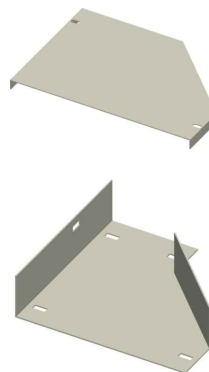
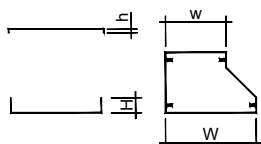
A Richiesta. Materiale: Alluminio - Finitura: Verniciatura - Altezza (H): 50+100 mm - Spessore (Th): 1,0 - 1,2 - 1,5 - 2 mm.
 On request. Material: Aluminium - Finish: Paint job - Height (H): 50+100 mm - Thickness (Th): 1,0 - 1,2 - 1,5 - 2 mm.



20 [riduzione sinistra | left reduction]

PFL

[riduzione sinistra | left reduction]



ELEMENTO | ELEMENT

Descr.	H	W	w	L	Th
PFL25-RS-100/50	25	100	50	150	1
PFL25-RS-100/50	25	100	50	150	1,2
PFL50-RS-100/50	50	100	50	150	1,2
PFL50-RS-200/100	50	200	100	200	1,2
PFL50-RS-300/100	50	300	100	300	1,2
PFL50-RS-300/200	50	300	200	200	1,2
PFL50-RS-100/50	50	100	50	150	1,5
PFL50-RS-200/100	50	200	100	200	1,5
PFL50-RS-300/100	50	300	100	300	1,5
PFL50-RS-300/200	50	300	200	200	1,5
PFL75-RS-200/100	75	200	100	200	1,2
PFL75-RS-300/100	75	300	100	300	1,2
PFL75-RS-300/200	75	300	200	200	1,2
PFL75-RS-400/100	75	400	100	400	1,2
PFL75-RS-400/200	75	400	200	300	1,2
PFL75-RS-400/300	75	400	300	200	1,2
PFL75-RS-500/100	75	500	100	500	1,2
PFL75-RS-500/200	75	500	200	400	1,2
PFL75-RS-500/300	75	500	300	300	1,2
PFL75-RS-500/400	75	500	400	200	1,2
PFL75-RS-200/100	75	200	100	200	1,5
PFL75-RS-300/100	75	300	100	300	1,5
PFL75-RS-300/200	75	300	200	200	1,5
PFL75-RS-400/100	75	400	100	400	1,5
PFL75-RS-400/200	75	400	200	300	1,5
PFL75-RS-400/300	75	400	300	200	1,5
PFL75-RS-500/100	75	500	100	500	1,5
PFL75-RS-500/200	75	500	200	400	1,5
PFL75-RS-500/300	75	500	300	300	1,5
PFL75-RS-500/400	75	500	400	200	1,5

CODICE | CODE

HDG	AISI 304	AISI 316
PZRS0201BCS	PIRS0201BCS	PYRS0201BCS
PZRS0201AXQ	PIRS0201AXQ	PYRS0201AXQ
PZRS0201AKA	PIRS0402AKA	PYRS0402AKA
PZRS0402AKA	PIRS0602AKA	PYRS0602AKA
PZRS0602AKA	PIRS0402AKA	PYRS0402AKA
PZRS0604AKA	PIRS0602AKA	PYRS0602AKA
E2RS0201	PIRS0402AGD	PYRS0402AGD
E2RS0402	PIRS0602AGD	PYRS0602AGD
E2RS0602	PIRS0402AGD	PYRS0402AGD
E2RS0604	PIRS0602AGD	PYRS0602AGD
PZRS0402ASO	PIRS0402ASO	PYRS0402ASO
PZRS0602ASO	PIRS0602ASO	PYRS0602ASO
PZRS0604ASO	PIRS0402ASO	PYRS0402ASO
PZRS0802ASO	PIRS0602ASO	PYRS0602ASO
PZRS0804ASO	PIRS0402ASO	PYRS0402ASO
PZRS0806ASO	PIRS0602ASO	PYRS0602ASO
PZRS1002ASO	PIRS0402ASO	PYRS0402ASO
PZRS1004ASO	PIRS0602ASO	PYRS0602ASO
PZRS1006ASO	PIRS0402ASO	PYRS0402ASO
PZRS1008ASO	PIRS0602ASO	PYRS0602ASO
E3RS0402	PIRS0402AGC	PYRS0402AGC
E3RS0602	PIRS0602AGC	PYRS0602AGC
E3RS0604	PIRS0402AGC	PYRS0402AGC
E3RS0802	PIRS0602AGC	PYRS0602AGC
E3RS0804	PIRS0402AGC	PYRS0402AGC
E3RS0806	PIRS0602AGC	PYRS0602AGC
E3RS1002	PIRS0402AGC	PYRS0402AGC
E3RS1004	PIRS0602AGC	PYRS0602AGC
E3RS1006	PIRS0402AGC	PYRS0402AGC
E3RS1008	PIRS0602AGC	PYRS0602AGC

COPERCHIO | COVER

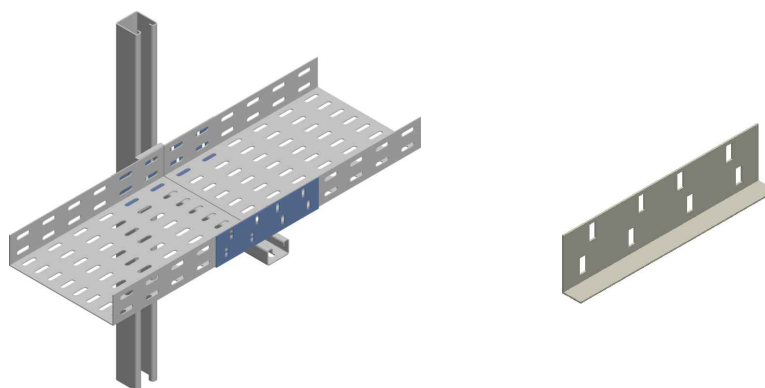
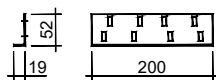
Descr.	h	W	w	Th
PFL-CRS-100/50	12	100	50	1
PFL-CRS-200/100	12	200	100	1
PFL-CRS-300/100	12	300	100	1
PFL-CRS-300/200	12	300	200	1
PFL-CRS-400/100	12	400	100	1
PFL-CRS-400/200	12	400	200	1
PFL-CRS-400/300	12	400	300	1
PFL-CRS-500/100	12	500	100	1
PFL-CRS-500/200	12	500	200	1
PFL-CRS-500/300	12	500	300	1
PFL-CRS-500/400	12	500	400	1

CODICE | CODE

HDG	AISI 304	AISI 316
L0RS0201	CIRS0402AFT	CYRS0402AFT
L0RS0402	CIRS0602AFT	CYRS0602AFT
L0RS0602	CIRS0604AFT	CYRS0604AFT
L0RS0604	CIRS0802AFT	CYRS0802AFT
L0RS0802	CIRS0804AFT	CYRS0804AFT
L0RS0804	CIRS0806AFT	CYRS0806AFT
L0RS0806	CIRS1002AFT	CYRS1002AFT
L0RS1002	CIRS1004AFT	CYRS1004AFT
L0RS1004	CIRS1006AFT	CYRS1006AFT
L0RS1006	CIRS1008AFT	CYRS1008AFT
L0RS1008	CIRS1202AFT	CYRS1202AFT

A Richiesta. Materiale: Alluminio - Finitura: Verniciatura - Altezza (H): 50+100 mm - Spessore (Th): 1,0 - 1,2 - 1,5 - 2 mm.
 On request. Material: Aluminium - Finish: Paint job - Height (H): 50+100 mm - Thickness (Th): 1,0 - 1,2 - 1,5 - 2 mm.

[giunto normale | normal joint]



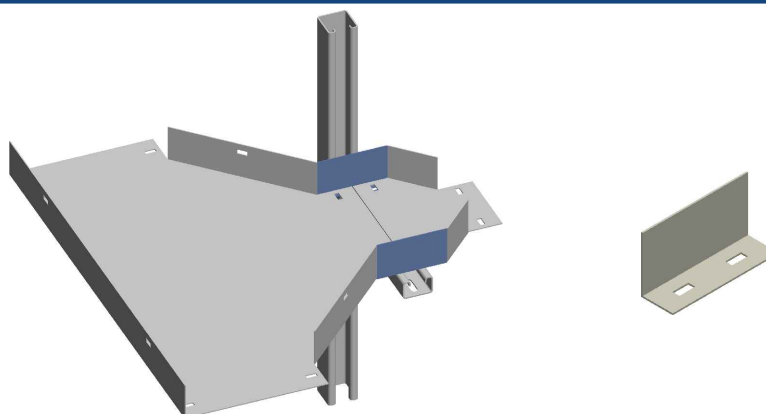
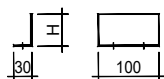
ELEMENTO | ELEMENT

CODICE | CODE

Descr.	H	Th	HDG	AISI 304	AISI 316
PFL-GN	52	1,2	AZGN0000ALR	AIGN0000ALR	AYGN0000ALR
PFL-GN	52	1,5	E0GN0000	AIGN0000AFQ	AYGN0000AFQ

A Richiesta. Materiale: Alluminio - Finitura: Verniciatura - Spessore (Th): 1,0 - 1,2 - 1,5 - 2 mm. **On request.** Material: Aluminium - Finish: Paint job - Thickness (Th): 1,0 - 1,2 - 1,5 - 2 mm.

[giunto per pezzi speciali | joint for special components]



ELEMENTO | ELEMENT

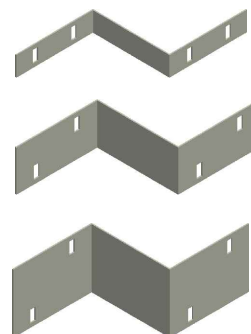
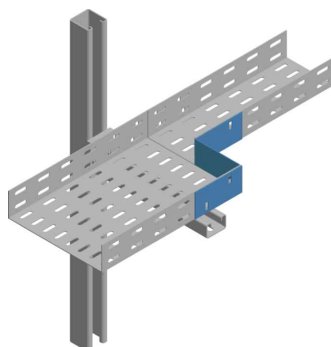
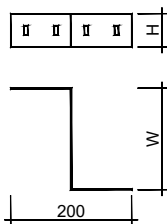
CODICE | CODE

Descr.	A	H	Th	HDG	AISI 304	AISI 316
PFL25-GPS	80	28	1,5	E0GS0025	-	-
PFL50-GPS	100	53	1,5	E0GS0050	-	-
PFL75-GPS	120	78	1,5	E0GS0075	-	-

A Richiesta. Materiale: Alluminio - Finitura: Verniciatura - Spessore (Th): 1,0 - 1,2 - 1,5 - 2 mm. **On request.** Material: Aluminium - Finish: Paint job - Thickness (Th): 1,0 - 1,2 - 1,5 - 2 mm.



[giunto di riduzione | reduction joint]



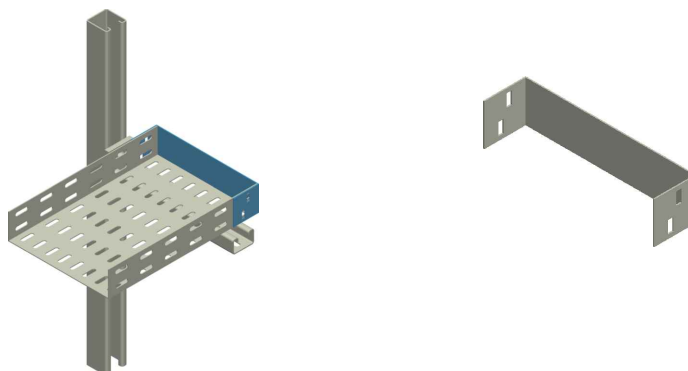
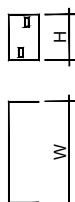
ELEMENTO | ELEMENT

CODICE | CODE

Descr.	H	W	Th	HDG	AISI 304	AISI 316
PFL25-GR-50	25	50	1	AZGR0001BDU	AIGR0001BDU	AYGR0001BDU
PFL25-GR-50	25	50	1,2	AZGR0001BDV	AIGR0001BDV	AYGR0001BDV
PFL50-GR-50	50	50	1,2	AZGR0001BDW	AIGR0001BDW	AYGR0001BDW
PFL50-GR-100	50	100	1,2	AZGR0002BDW	AIGR0002BDW	AYGR0002BDW
PFL50-GR-150	50	150	1,2	AZGR0003BDW	AIGR0003BDW	AYGR0003BDW
PFL50-GR-200	50	200	1,2	AZGR0004BDW	AIGR0004BDW	AYGR0004BDW
PFL50-GR-250	50	250	1,2	AZGR0005BDW	AIGR0005BDW	AYGR0005BDW
PFL50-GR-50	50	50	1,5	AZGR0001AMV	AIGR0001AMV	AYGR0001AMV
PFL50-GR-100	50	100	1,5	AZGR0002AMV	AIGR0002AMV	AYGR0002AMV
PFL50-GR-150	50	150	1,5	AZGR0003AMV	AIGR0003AMV	AYGR0003AMV
PFL50-GR-200	50	200	1,5	AZGR0004AMV	AIGR0004AMV	AYGR0004AMV
PFL50-GR-250	50	250	1,5	AZGR0005AMV	AIGR0005AMV	AYGR0005AMV
PFL75-GR-100	75	100	1,2	AZGR0002BDX	AIGR0002BDX	AYGR0002BDX
PFL75-GR-200	75	200	1,2	AZGR0004BDX	AIGR0004BDX	AYGR0004BDX
PFL75-GR-300	75	300	1,2	AZGR0006BDX	AIGR0006BDX	AYGR0006BDX
PFL75-GR-400	75	400	1,2	AZGR0008BDX	AIGR0008BDX	AYGR0008BDX
PFL75-GR-100	75	100	1,5	AZGR0002BDY	AIGR0002BDY	AYGR0002BDY
PFL75-GR-200	75	200	1,5	AZGR0004BDY	AIGR0004BDY	AYGR0004BDY
PFL75-GR-300	75	300	1,5	AZGR0006BDY	AIGR0006BDY	AYGR0006BDY
PFL75-GR-400	75	400	1,5	AZGR0008BDY	AIGR0008BDY	AYGR0008BDY

A Richiesta. Materiale: Alluminio - Finitura: Verniciatura - Spessore (Th): 1,0 - 1,2 - 1,5 - 2 mm. On request. Material: Aluminium - Finish: Paint job - Thickness (Th): 1,0 - 1,2 - 1,5 - 2 mm.

[terminazione passerella | end plate]



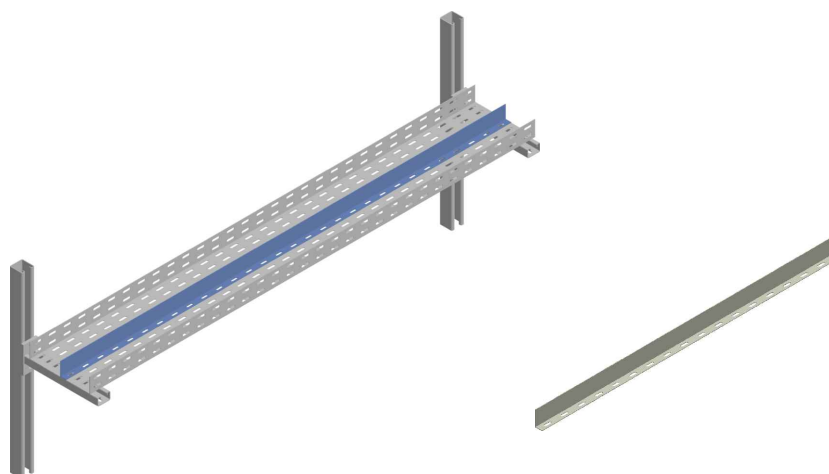
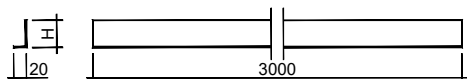
ELEMENTO | ELEMENT

CODICE | CODE

Descr.	H	W	Th	CODICE CODE		
				HDG	AISI 304	AISI 316
PFL25-TP-50	25	50	1,5	E0TP0101	AITP0001BDZ	AYTP0001BDZ
PFL25-TP-100	25	100	1,5	E0TP0102	AITP0002BDZ	AYTP0002BDZ
PFL50-TP-50	50	50	1,5	E0TP0201	AITP0001AOC	AYTP0001AOC
PFL50-TP-100	50	100	1,5	E0TP0202	AITP0002AOC	AYTP0002AOC
PFL50-TP-200	50	200	1,5	E0TP0204	AITP0004AOC	AYTP0004AOC
PFL50-TP-300	50	300	1,5	E0TP0206	AITP0006AOC	AYTP0006AOC
PFL75-TP-100	75	100	1,5	E0TP0302	AITP0002AOB	AYTP0002AOB
PFL75-TP-200	75	200	1,5	E0TP0304	AITP0004AOB	AYTP0004AOB
PFL75-TP-300	75	300	1,5	E0TP0306	AITP0006AOB	AYTP0006AOB
PFL75-TP-400	75	400	1,5	E0TP0308	AITP0008AOB	AYTP0008AOB
PFL75-TP-500	75	500	1,5	E0TP0310	AITP0010AOB	AYTP0010AOB

A Richiesta. Materiale: Alluminio - Finitura: Verniciatura - Spessore (Th): 1,0 - 1,2 - 1,5 - 2 mm. **On request.** Material: Aluminium - Finish: Paint job - Thickness (Th): 1,0 - 1,2 - 1,5 - 2 mm.

[setto separatore | divider]



ELEMENTO | ELEMENT

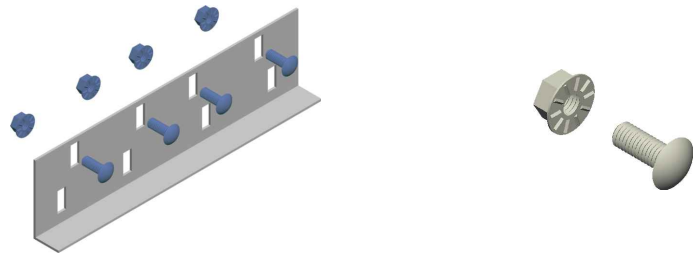
CODICE | CODE

Descr.	H	Th	CODICE CODE		
			HDG	AISI 304	AISI 316
PFL25-SS	20	1,5	E0SS3025	AISS3000BEA	AYSS3000BEA
PFL50-SS	45	1,5	E0SS3050	AISS3000AME	AYSS3000AME
PFL75-SS	70	1,5	E0SS3075	AISS3000BEB	AYSS3000BEB

A Richiesta. Materiale: Alluminio - Finitura: Verniciatura - Spessore (Th): 1,0 - 1,2 - 1,5 - 2 mm. **On request.** Material: Aluminium - Finish: Paint job - Thickness (Th): 1,0 - 1,2 - 1,5 - 2 mm.



[bullone per giunzioni | bolt for joints]

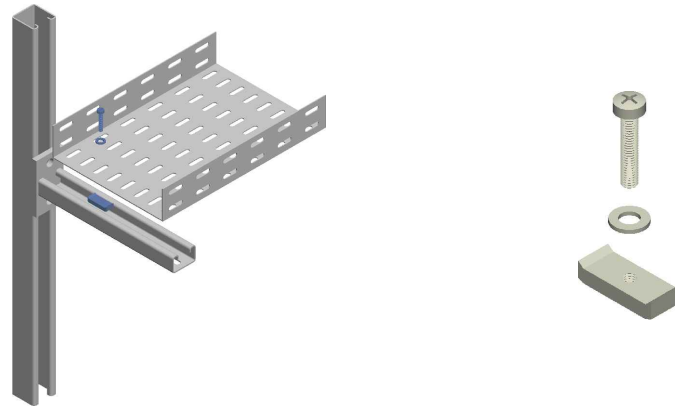


ELEMENTO | ELEMENT

CODICE | CODE

Descr.	EGS	AISI 304	AISI 316
Vite TTQST M6x12 / Cup square screw M6x12	VEQ612		VYQ615
Vite TTQST M6x16 / Cup square screw M6x16	VEDZ06	VIQ615	VYDZ06
Dado M6 / Nut M6		VIDZ06	

[bullone fissaggio passerella | cable raceways fixing bolt]

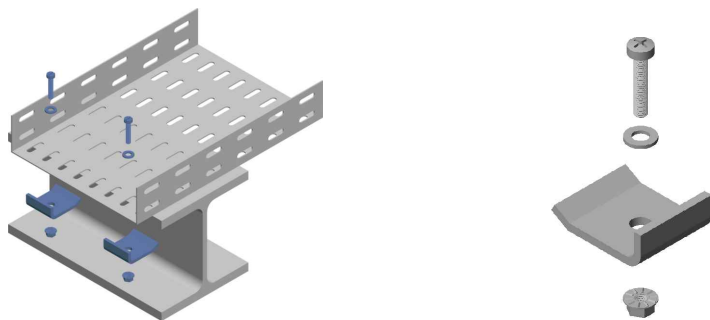


ELEMENTO | ELEMENT

CODICE | CODE

Descr.	EGS	AISI 304	AISI 316
Vite M6x25 / Screw M6x25	VEX625	VIX625	VYX625
Rondella piana D6 / Washer D6	VERP06	VIRP06	VYRP06
Dado ad ancora M6 / Anchor nut M6	VEA006	VIA006	VYA006

[bullone fissaggio passerella a rack | cable raceways fixing bolt to rack]



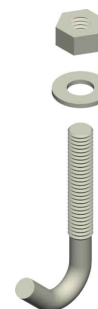
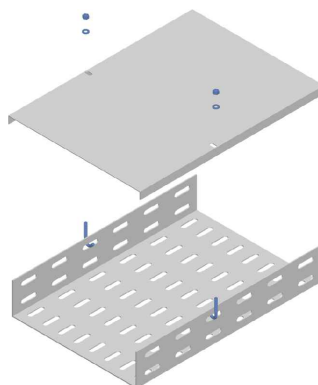
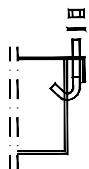
ELEMENTO | ELEMENT

CODICE | CODE

Descr.	EGS	AISI 304	AISI 316
Vite M6x40 / Screw M6x40	VEX640	VIX640	VYX640
Rondella piana D6 / Washer D6	VERP06	VIRP06	VYRP06
Piastrina BFP-RACK / Plate BFP-RACK	* S0FP0002	S0FP0012	S0FP0022
Dado M6 / Nut M6	VEDZ06	VIDZ06	VYDZ06

* Acciaio zincato a caldo - Hot dip galvanized

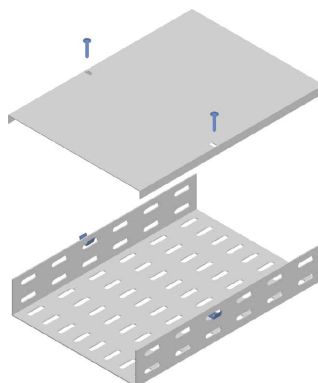
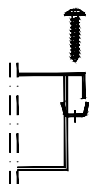
[fissaggio coperchio | cover fixing]



ELEMENTO | ELEMENT

CODICE | CODE

Descr.	AISI 304	AISI 316
Dado M4 / Nut M4	VIDM04	VYDM04
Rondella piana D4 / Washer D4	VIRP04	VYRP04
Gancio fissaggio coperchio / Hook cover fixing	VIG432	VYG432



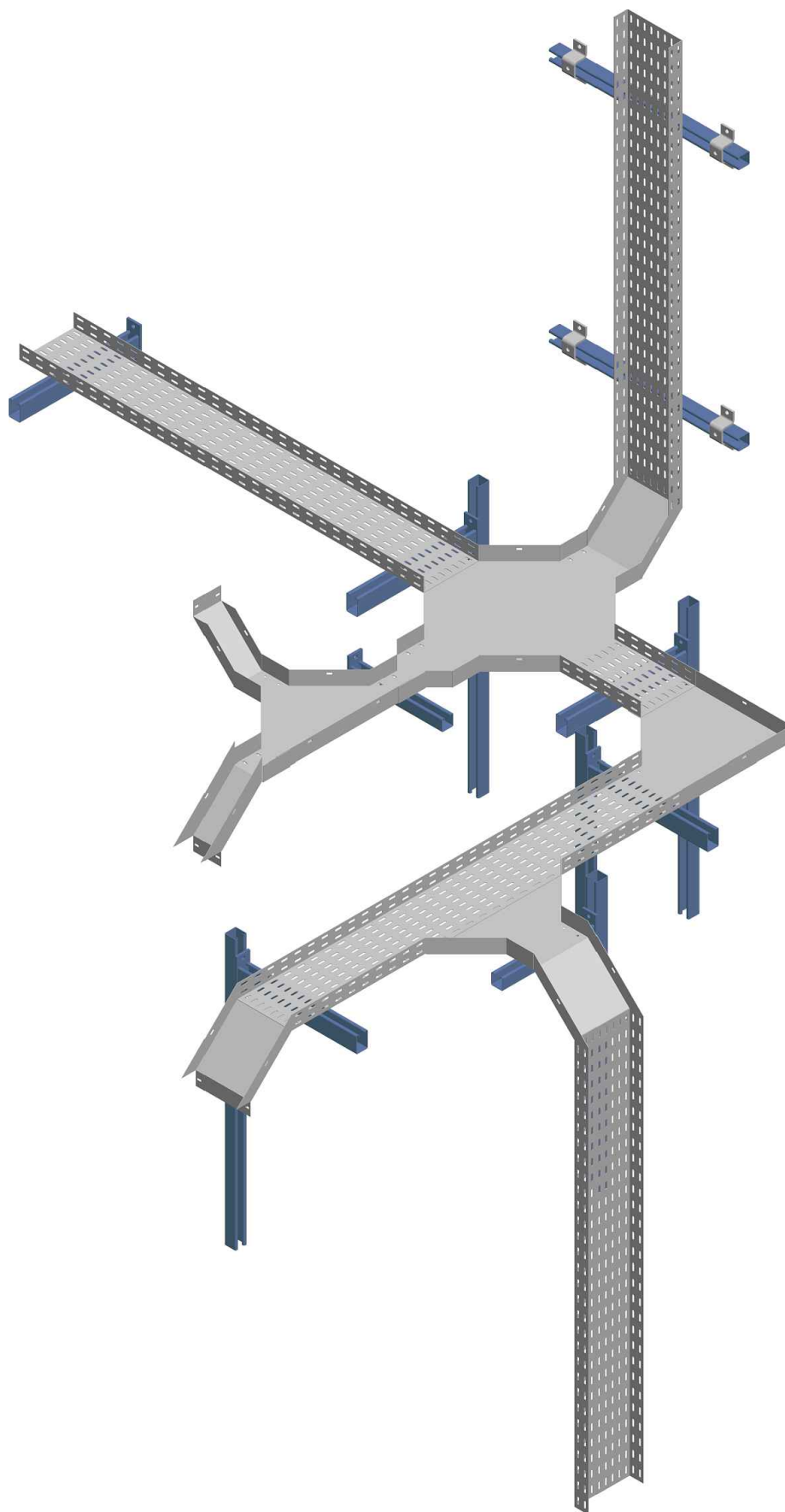
ELEMENTO | ELEMENT

CODICE | CODE

Descr.	AISI 304	AISI 316
Vite fissaggio coperchio 4x25 / Cover fixing screw 4x25	VIA425	VYA425
Piastrina fissaggio coperchio / Plate cover fixing	VIFC04	VYFC04



[esempio di assembraggio | assembling example]



SITIE

IMPIANTI INDUSTRIALI SpA



Sitie Impianti Industriali S.p.A.
Società con Unico Socio Soggetta all'attività di direzione e coordinamento di Aurora 2010 Srl
Sede Legale: V.le Tiziano, 80 -00196 ROMA
Uff. Amm.vi e Stabilimento: Via Finati, 6 - 44124 FERRARA (FE) - Italy
Tel. +39 0532 734611 - Fax +39 0532 734603
Cap. Soc. € 4.000.000 i.v. - Reg. Impr. RM 01038020382 - R.E.A. n. RM- 1578148 C.F. e P.I. IT 01038020382
<http://www.sitie.it>

