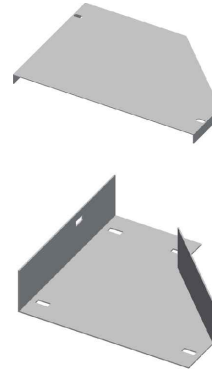
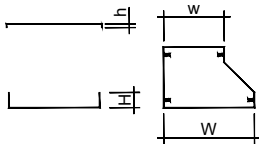


20 [riduzione sinistra | left reduction]

PFL

[riduzione sinistra | left reduction]



ELEMENTO | ELEMENT

Descr.	H	W	w	L	Th
PFL25-RS-100/50	25	100	50	150	1
PFL25-RS-100/50	25	100	50	150	1,2
PFL50-RS-100/50	50	100	50	150	1,2
PFL50-RS-200/100	50	200	100	200	1,2
PFL50-RS-300/100	50	300	100	300	1,2
PFL50-RS-300/200	50	300	200	200	1,2
PFL50-RS-100/50	50	100	50	150	1,5
PFL50-RS-200/100	50	200	100	200	1,5
PFL50-RS-300/100	50	300	100	300	1,5
PFL50-RS-300/200	50	300	200	200	1,5
PFL75-RS-200/100	75	200	100	200	1,2
PFL75-RS-300/100	75	300	100	300	1,2
PFL75-RS-300/200	75	300	200	200	1,2
PFL75-RS-400/100	75	400	100	400	1,2
PFL75-RS-400/200	75	400	200	300	1,2
PFL75-RS-400/300	75	400	300	200	1,2
PFL75-RS-500/100	75	500	100	500	1,2
PFL75-RS-500/200	75	500	200	400	1,2
PFL75-RS-500/300	75	500	300	300	1,2
PFL75-RS-500/400	75	500	400	200	1,2
PFL75-RS-200/100	75	200	100	200	1,5
PFL75-RS-300/100	75	300	100	300	1,5
PFL75-RS-300/200	75	300	200	200	1,5
PFL75-RS-400/100	75	400	100	400	1,5
PFL75-RS-400/200	75	400	200	300	1,5
PFL75-RS-400/300	75	400	300	200	1,5
PFL75-RS-500/100	75	500	100	500	1,5
PFL75-RS-500/200	75	500	200	400	1,5
PFL75-RS-500/300	75	500	300	300	1,5
PFL75-RS-500/400	75	500	400	200	1,5

CODICE | CODE

HDG	AISI 304	AISI 316
PZRS0201BCS	PIRS0201BCS	PYRS0201BCS
PZRS0201AXQ	PIRS0201AXQ	PYRS0201AXQ
PZRS0201AKA	PIRS0402AKA	PYRS0402AKA
PZRS0402AKA	PIRS0602AKA	PYRS0602AKA
PZRS0602AKA	PIRS0402AKA	PYRS0402AKA
PZRS0604AKA	PIRS0602AKA	PYRS0602AKA
E2RS0201	PIRS0402AGD	PYRS0402AGD
E2RS0402	PIRS0602AGD	PYRS0602AGD
E2RS0602	PIRS0402AGD	PYRS0402AGD
E2RS0604	PIRS0602AGD	PYRS0602AGD
PZRS0402ASO	PIRS0402ASO	PYRS0402ASO
PZRS0602ASO	PIRS0602ASO	PYRS0602ASO
PZRS0604ASO	PIRS0402ASO	PYRS0402ASO
PZRS0802ASO	PIRS0602ASO	PYRS0602ASO
PZRS0804ASO	PIRS0402ASO	PYRS0402ASO
PZRS0806ASO	PIRS0602ASO	PYRS0602ASO
PZRS1002ASO	PIRS0402ASO	PYRS0402ASO
PZRS1004ASO	PIRS0602ASO	PYRS0602ASO
PZRS1006ASO	PIRS0402ASO	PYRS0402ASO
PZRS1008ASO	PIRS0602ASO	PYRS0602ASO
E3RS0402	PIRS0402AGC	PYRS0402AGC
E3RS0602	PIRS0602AGC	PYRS0602AGC
E3RS0604	PIRS0402AGC	PYRS0402AGC
E3RS0802	PIRS0602AGC	PYRS0602AGC
E3RS0804	PIRS0402AGC	PYRS0402AGC
E3RS0806	PIRS0602AGC	PYRS0602AGC
E3RS1002	PIRS0402AGC	PYRS0402AGC
E3RS1004	PIRS0602AGC	PYRS0602AGC
E3RS1006	PIRS0402AGC	PYRS0402AGC
E3RS1008	PIRS0602AGC	PYRS0602AGC

COPERCHIO | COVER

Descr.	h	W	w	Th
PFL-CRS-100/50	12	100	50	1
PFL-CRS-200/100	12	200	100	1
PFL-CRS-300/100	12	300	100	1
PFL-CRS-300/200	12	300	200	1
PFL-CRS-400/100	12	400	100	1
PFL-CRS-400/200	12	400	200	1
PFL-CRS-400/300	12	400	300	1
PFL-CRS-500/100	12	500	100	1
PFL-CRS-500/200	12	500	200	1
PFL-CRS-500/300	12	500	300	1
PFL-CRS-500/400	12	500	400	1

CODICE | CODE

HDG	AISI 304	AISI 316
L0RS0201	CIRS0402AFT	CYRS0402AFT
L0RS0402	CIRS0602AFT	CYRS0602AFT
L0RS0602	CIRS0604AFT	CYRS0604AFT
L0RS0604	CIRS0802AFT	CYRS0802AFT
L0RS0802	CIRS0804AFT	CYRS0804AFT
L0RS0804	CIRS0806AFT	CYRS0806AFT
L0RS0806	CIRS1002AFT	CYRS1002AFT
L0RS1002	CIRS1004AFT	CYRS1004AFT
L0RS1004	CIRS1006AFT	CYRS1006AFT
L0RS1006	CIRS1008AFT	CYRS1008AFT
L0RS1008	CIRS1202AFT	CYRS1202AFT

A Richiesta. Materiale: Alluminio - Finitura: Verniciatura - Altezza (H): 50+100 mm - Spessore (Th): 1,0 - 1,2 - 1,5 - 2 mm.
 On request. Material: Aluminium - Finish: Paint job - Height (H): 50+100 mm - Thickness (Th): 1,0 - 1,2 - 1,5 - 2 mm.