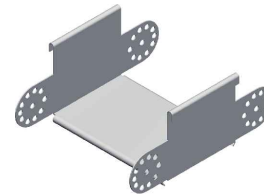
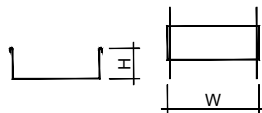


[ elemento curva snodata | hinged bend element ]



ELEMENTO | ELEMENT

CODICE | CODE

Descr.	H	W	Th	HDG	AISI 304	AISI 316
PFLR60-CSN-100	60	100	1,2	PZSN0002BCP	PISN0002BCP	PYSN0002BCP
PFLR60-CSN-200	60	200	1,2	PZSN0004BCP	PISN0004BCP	PYSN0004BCP
PFLR60-CSN-300	60	300	1,2	PZSN0006BCP	PISN0006BCP	PYSN0006BCP
PFLR60-CSN-400	60	400	1,2	PZSN0008BCP	PISN0008BCP	PYSN0008BCP
PFLR60-CSN-500	60	500	1,2	PZSN0010BCP	PISN0010BCP	PYSN0010BCP
PFLR60-CSN-600	60	600	1,2	PZSN0012BCP	PISN0012BCP	PYSN0012BCP
PFLR60-CSN-100	60	100	1,5	B0SN0002	PISN0002BCQ	PYSN0002BCQ
PFLR60-CSN-200	60	200	1,5	B0SN0004	PISN0004BCQ	PYSN0004BCQ
PFLR60-CSN-300	60	300	1,5	B0SN0006	PISN0006BCQ	PYSN0006BCQ
PFLR60-CSN-400	60	400	1,5	B0SN0008	PISN0008BCQ	PYSN0008BCQ
PFLR60-CSN-500	60	500	1,5	B0SN0010	PISN0010BCQ	PYSN0010BCQ
PFLR60-CSN-600	60	600	1,5	B0SN0012	PISN0012BCQ	PYSN0012BCQ
PFLR100-CSN-100	100	100	1,5	C0SN0002	PISN0002AZZ	PYSN0002AZZ
PFLR100-CSN-200	100	200	1,5	C0SN0004	PISN0004AZZ	PYSN0004AZZ
PFLR100-CSN-300	100	300	1,5	C0SN0006	PISN0006AZZ	PYSN0006AZZ
PFLR100-CSN-400	100	400	1,5	C0SN0008	PISN0008AZZ	PYSN0008AZZ
PFLR100-CSN-500	100	500	1,5	C0SN0010	PISN0010AZZ	PYSN0010AZZ
PFLR100-CSN-600	100	600	1,5	C0SN0012	PISN0012AZZ	PYSN0012AZZ
PFLR100-CSN-100	100	100	2	PZSN0002BCR	PISN0002BCR	PYSN0002BCR
PFLR100-CSN-200	100	200	2	PZSN0004BCR	PISN0004BCR	PYSN0004BCR
PFLR100-CSN-300	100	300	2	PZSN0006BCR	PISN0006BCR	PYSN0006BCR
PFLR100-CSN-400	100	400	2	PZSN0008BCR	PISN0008BCR	PYSN0008BCR
PFLR100-CSN-500	100	500	2	PZSN0010BCR	PISN0010BCR	PYSN0010BCR
PFLR100-CSN-600	100	600	2	PZSN0012BCR	PISN0012BCR	PYSN0012BCR

**A Richiesta.** Materiale: Alluminio - Finitura: Verniciatura - Altezza (H): 50+150 mm - Raggio (R): 300+1000 mm - Spessore (Th): 1,0 - 1,2 - 1,5 - 2 mm.  
**On request.** Material: Aluminium - Finish: Paint job - Height (H): 50+150 mm - Radius (R): 300+1000 mm - Thickness (Th): 1,0 - 1,2 - 1,5 - 2 mm.