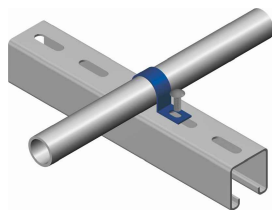
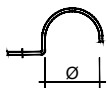


## [ gaffetta | collar ]



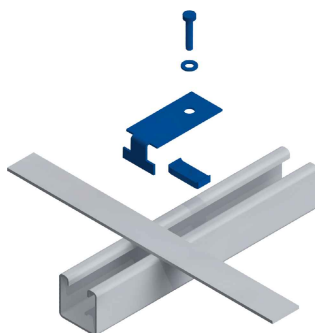
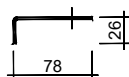
### ELEMENTO | ELEMENT

### CODICE | CODE

Ø Tubo / Ø Conduit	EGS	AISI 304	AISI 316
1/2"	MV020000GF04	*	*
3/4"	MV020000GF05	*	*
1"	MV020000GF06	*	*
1.1/4"	MV020000GF07	*	*
1.1/2"	MV020000GF08	*	*
2"	MV020000GF09	*	*

\* A richiesta - On request

## [ kit per fissaggio piatto di terra | earth bar fixing kit ]



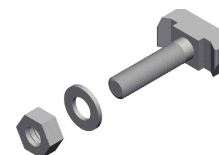
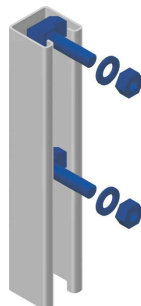
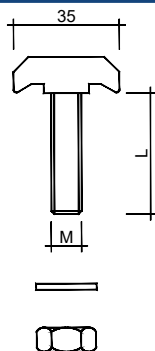
### ELEMENTO | ELEMENT

### CODICE | CODE

Descr.	EGS	AISI 304	AISI 316
Vite M6x25 / Screw M6x25	VEX625	VIX625	VY625
Rondella piana D=6 / Washer D6	VERP06	VIRP06	VYRP06
FR-405	S0FR0000 **	*	*
Dado ad ancora M6 / Anchor nut M6	VEA006	VIA006	VYA006

\* A richiesta - On request \*\* Rame / Copper

## [ bullone fissaggio sostegni | support fixing bolt ]



### ELEMENTO | ELEMENT

### CODICE | CODE

Descr.	M	L	HDG	AISI 304	AISI 316
Vite ad ancora / Anchor bolt	10	40	VZ1040	*	*
Rondella piana / Washer			VZRP10	*	*
Dado / Nut			VZDM10	*	*
Vite ad ancora / Anchor bolt	12	40	VZ1240	*	*
Rondella piana / Washer			VZRP12	*	*
Dado / Nut			VZDM12	*	*

\* A richiesta - On request